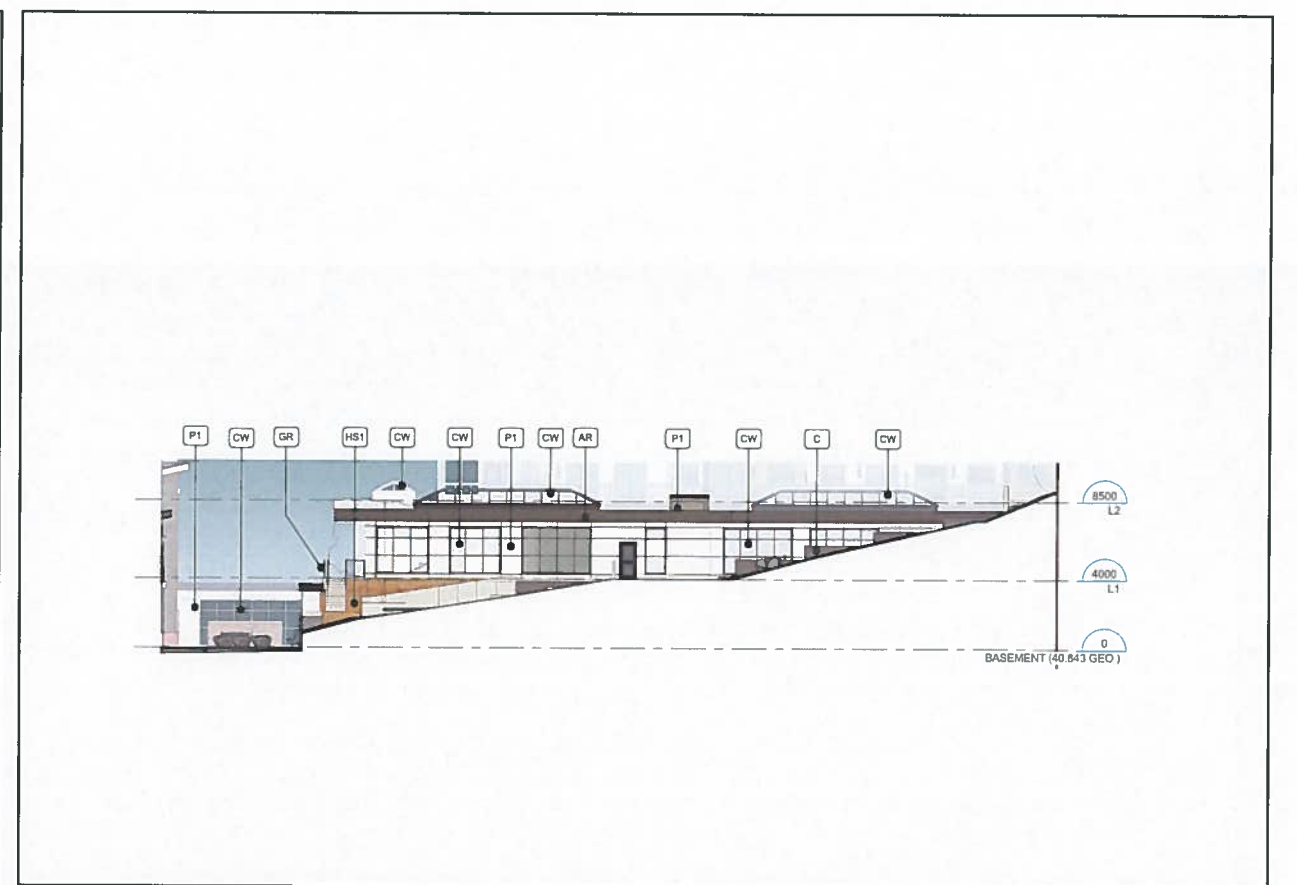




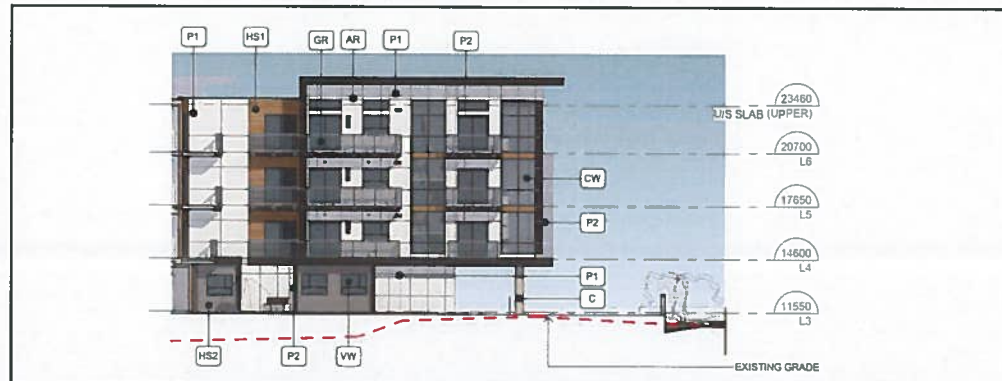
1 | EXTERIOR ELEVATION - NORTH (BLDG A)  
1 : 200



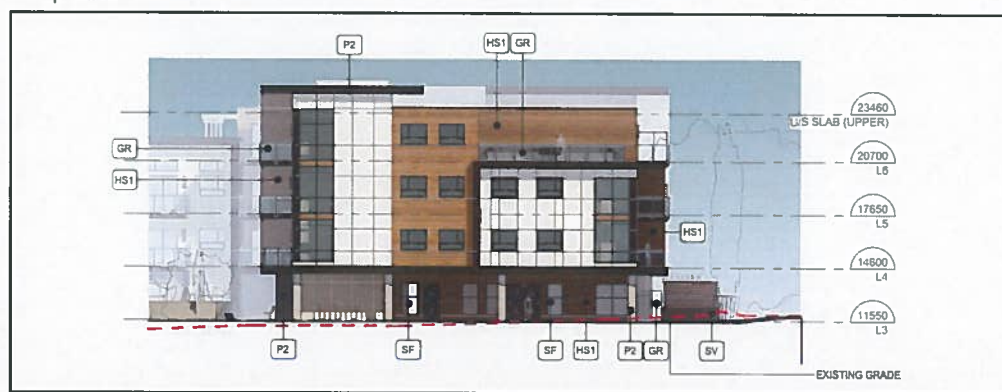
2 | EXTERIOR ELEVATION - NORTH (DAYCARE)  
1 : 200



3 | EXTERIOR ELEVATION - EAST (BLDG A)  
1 : 200



4 | EXTERIOR ELEVATION - EAST (BLDG B)  
1 : 200

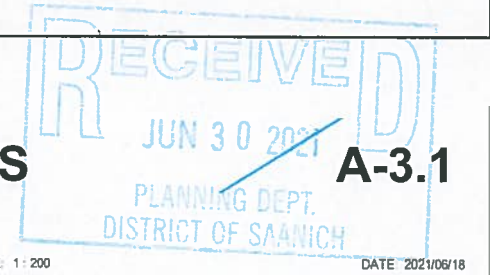


5 | EXTERIOR ELEVATION - NORTH (BLDG B)  
1 : 200

ELEVATION KEY NOTES

| Key Value | Keynote Text                                 |
|-----------|--|
| AR        | ALUMINUM REVEAL - BLACK ANODIZED             |
| C         | CONCRETE - SANDBLASTED FRESH                 |
| CW        | CURTAINWALL - BLACK ANODIZED                 |
| GR        | ALUMINUM GUARDRAIL - GLAZED - BLACK ANODIZED |
| HS1       | HORIZONTAL SIDING - WOODGRAIN                |
| HS2       | HORIZONTAL SIDING - LIGHT GREY               |
| P1        | PANEL COLOUR 1 - WHITE                       |
| P2        | PANEL COLOUR 2 - CHARCOAL                    |
| P3        | PANEL COLOUR 3 - LIGHT GREY                  |
| SF        | STOREFRONT GLAZING - BLACK ANODIZED          |
| SV        | STONE VENEER - PACIFIC ASHLAR                |
| VV        | ALUMINUM CLAD VINYL WINDOW - BLACK ANODIZED  |

| # | DP AMENDMENT # | DATE       |
|---|----------------|------------|
| 1 | DP AMENDMENT 1 | 2021-05-18 |
| 2 | DP AMENDMENT 1 | 2021-05-19 |
| 3 | DP AMENDMENT 3 | 2020-12-09 |
| 4 | DP AMENDMENT 1 | 2020-05-13 |
| 5 | DP AMENDMENT 1 | 2018-12-13 |
| 6 | DP AMENDMENT 1 | 2018-08-18 |





1 | EXTERIOR ELEVATION - SOUTH  
1:200



2 | EXTERIOR ELEVATION - WEST  
1:200

ELEVATION KEY NOTES

| Key Value | Keynote Text                                 |
|-----------|--|
| AR        | ALUMINUM REVEAL - BLACK ANODIZED             |
| C         | CONCRETE - SANDBLASTED FINISH                |
| CW        | CURTAINWALL - BLACK ANODIZED                 |
| GR        | ALUMINUM GUARDRAIL - GLAZED - BLACK ANODIZED |
| HS1       | HORIZONTAL SIDING - WOODGRAIN                |
| HS2       | HORIZONTAL SIDING - LIGHT GREY               |
| P1        | PANEL COLOUR 1 - WHITE                       |
| P2        | PANEL COLOUR 2 - CHARCOAL                    |
| P3        | PANEL COLOUR 3 - LIGHT GREY                  |
| SF        | STOREFRONT GLAZING - BLACK ANODIZED          |
| SV        | STONE VENEER - PACIFIC ASHLAR                |
| VW        | ALUMINUM CLAD VINYL WINDOW - BLACK ANODIZED  |

| No. | DP AMENDMENT   | Date       |
|-----|----------------|------------|
| 1   | DP AMENDMENT 1 | 2021-06-18 |
| 2   | DP AMENDMENT 2 | 2021-05-19 |
| 3   | DP AMENDMENT 3 | 2020-11-09 |
| 4   | DP AMENDMENT 4 | 2020-05-13 |
| 5   | DP AMENDMENT 5 | 2019-13-13 |
| 6   | DP AMENDMENT 6 | 2018-08-08 |
| 7   | DP AMENDMENT 7 | 2018-08-08 |