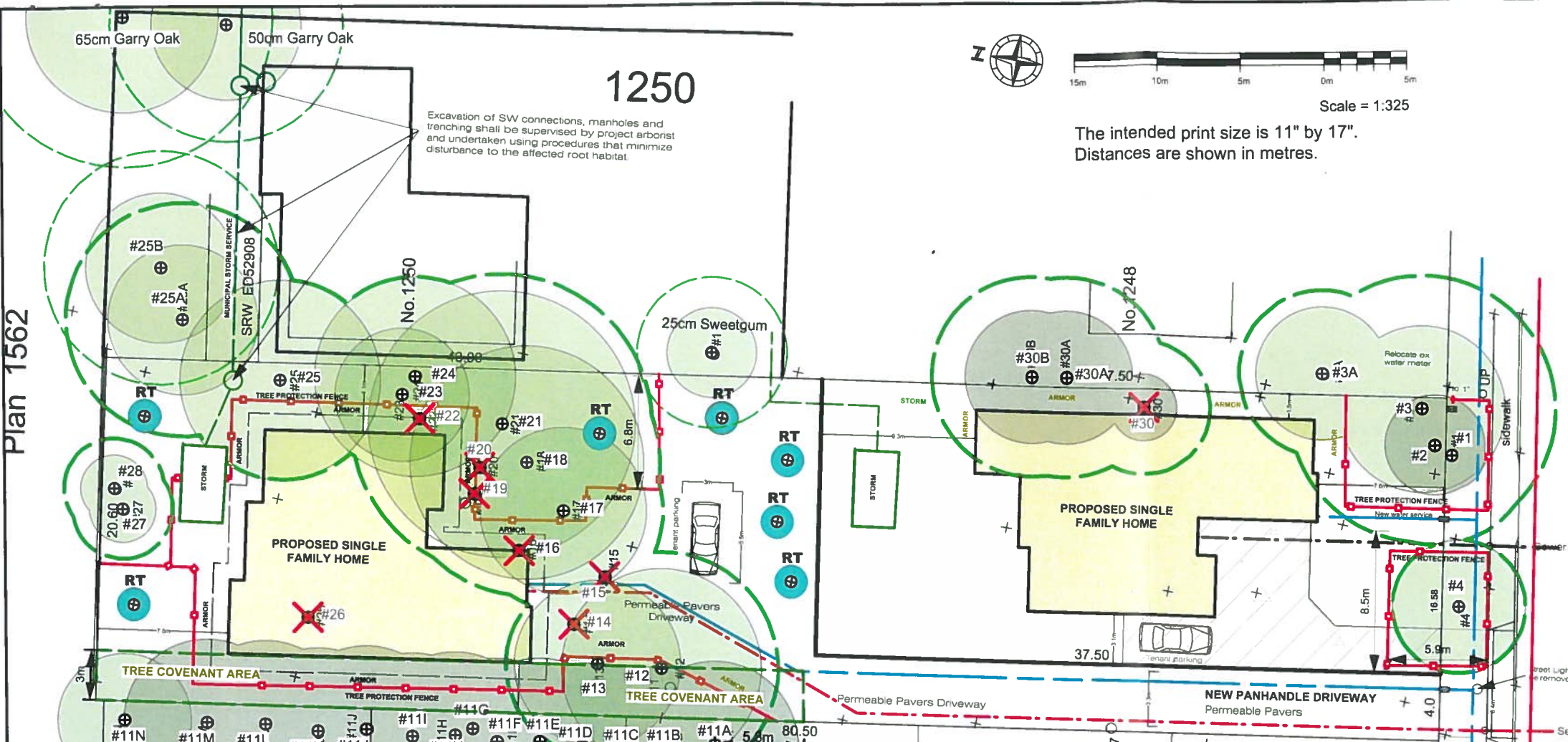
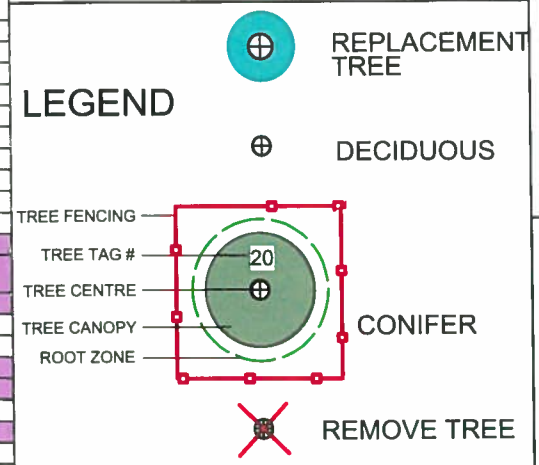


Plan 1562



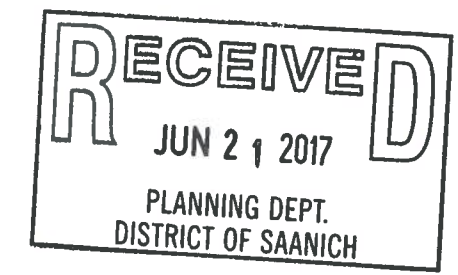
- ### TREE PRESERVATION MEASURES
- The contractor shall review the Tree Protection Plan with the project arborist and install all tree protection fencing and armoring as indicated. Contact the project arborist to inspect and approve fencing & armored area. **These conditions must be completed before a building permit can be issued by the District of Saanich.**
 - The arborist shall be present to oversee excavation, service trenching, site grading or blasting within, or adjacent to, the tree protection areas (TPAs). **This includes the extension of the stormwater service across the rear yard of 1250 Reynolds Rd.** Driveway grades and cross-sections will be adapted to bridge over tree roots and shall be approved by the arborist. Construction of the driveway within PRZs shall be supervised by the arborist.
 - Procedure for blasting near tree root zones:
 - When blasting is required immediately adjacent to a Tree Protection Area, the blasting contractor will work with the arborist to develop a blasting plan that minimizes impacts to protected trees.
 - Use DYNAMITE as the explosive product. No fertilizer-based explosive is permitted, due to its toxicity to tree roots.
 - Blasting vibrations in the vicinity of the Tree Protection Areas are not to exceed a peak particle velocity of 25 mm/sec.
 - Any damaged tree roots or branches shall be pruned back to undamaged tissue by the arborist. All excavated cuts within or adjacent to a TPA will be covered with securely fastened root fabric by the arborist to prevent soil desiccation and erosion.
 - Temporary construction access within a TPA must be approved and supervised by the project arborist.
 - Soil 'armoring' materials will consist of 3/4" plywood for light-duty usage; in areas subject to heavy machine use, use a 200mm lift of road-base, moderately compacted with a plate compactor.
 - No equipment, materials or excavated soil shall be placed or stored within the TPA. **THIS PARTICULARLY INCLUDES HOARDING OF EXCAVATED SOILS NEEDED FOR BACKFILLING OF THE BUILDING FOUNDATION.**
 - Seven replacement Garry Oaks (4cm caliper) shall be planted at the completion of the project as per District of Saanich specifications.
 - The Saanich Plant Salvage volunteers shall be provided an adequate opportunity to salvage the native wildflower bulbs on Lot B, prior to site preparation.

G&A Tree ID	Common Name	DBH (cm)	PRZ (m)	Crown radius (m)	Health (Good, Fair, Poor)	Structural Condition (Good, Fair, Poor)	Bylaw Protected Tree?	Comments / Notes	Recommendations
1	Lawson cedar	20	4	2	Good	Fair	No	Lean 15% E	RETAIN AND PROTECT
2	Lawson cedar	34	6	3	Good	Good	No		RETAIN AND PROTECT
3	Douglas fir	64	8	5	Good	Good	Yes		RETAIN AND PROTECT
3A	Birch	30	5	4	Good	Good	No	Offsite tree; no tag	RETAIN AND PROTECT
4	Ornamental plum	24	4	4	Good	Good	No		RETAIN AND PROTECT
11A	Leyland Cypress	36	6	5	Good	Good	No	Offsite tree; no tag	RETAIN AND PROTECT
11B	Leyland Cypress	32	6	5	Good	Good	No	Offsite tree; no tag	RETAIN AND PROTECT
11C	Leyland Cypress	34	6	5	Good	Fair	No	Offsite tree; previously topped; no tag	RETAIN AND PROTECT
11D	Leyland Cypress	32	6	5	Good	Fair	No	Offsite tree; previously topped; no tag	RETAIN AND PROTECT
11E	Leyland Cypress	32	6	5	Good	Fair	No	Offsite tree; previously topped; no tag	RETAIN AND PROTECT
11F	Leyland Cypress	30	5	5	Good	Fair	No	Offsite tree; previously topped; no tag	RETAIN AND PROTECT
11G	Garry oak	28	5	5	Good	Fair	Yes	Offsite tree; no tag	RETAIN AND PROTECT
11H	Leyland Cypress	30	5	5	Good	Fair	No	Offsite tree; previously topped; no tag	RETAIN AND PROTECT
11I	Leyland Cypress	32	6	5	Good	Fair	No	Offsite tree; previously topped; no tag	RETAIN AND PROTECT
11J	Leyland Cypress	38	7	5	Good	Good	No	Offsite tree; no tag	RETAIN AND PROTECT
11K	Leyland Cypress	30	5	5	Good	Good	No	Offsite tree; no tag	RETAIN AND PROTECT
11L	Leyland Cypress	32	6	5	Good	Fair	No	Offsite tree; previously topped; no tag	RETAIN AND PROTECT
11m	Leyland Cypress	32	6	5	Good	Fair	No	Offsite tree; previously topped; no tag	RETAIN AND PROTECT
11N	Garry oak	22	4	4	Fair	Fair	Yes	Offsite tree; no tag	RETAIN AND PROTECT
12	Garry oak	56	7	6	Good	Fair	Yes	Overextended branches; asymmetric crown to SE	RETAIN AND PROTECT
13	Garry oak	40	5	5	Good	Fair	Yes	Tree will be impacted by site servicing and driveway	RETAIN AND PROTECT
14	Garry oak	28	5	5	Good	Fair	Yes	Conflict with construction	REMOVE
15	Garry oak	46	6	6	Poor-Fair	Fair	Yes	Asymmetric crown to S; tree impacts by site servicing and driveway	REMOVE
16	Garry oak	48	6	7	Good	Good	Yes	Conflict with new house.	REMOVE
17	Garry oak	54	6	5	Poor-Fair	Fair	Yes	Asymmetric crown to S; dead branches	RETAIN AND PROTECT
18	Garry oak	44	8	7	Poor-Fair	Fair	Yes	Asymmetric crown to S; dead branches	RETAIN AND PROTECT
19	Garry oak	18	3	2	Poor	Poor	Yes	Conflict with new house.	REMOVE
20	Garry oak	20	4	4	Fair	Fair	Yes	Conflict with new house.	REMOVE
21	Garry oak	48	9	8	Fair	Fair	Yes	Crown large flush cut and decay	RETAIN AND PROTECT
22	Garry oak	46	8	8	Fair	Fair	Yes	Conflict with new house.	REMOVE
23	Garry oak	20	4	4	Good	Good	Yes	Dead branches	RETAIN AND PROTECT
24	Garry oak	34	6	6	Good	Fair	Yes	Leaning over neighboring house	RETAIN AND PROTECT
25	Garry oak	34	6	6	Fair	Fair	Yes		RETAIN AND PROTECT
25A & B	Garry oak	40	7	7	Good	Good	Yes	Offsite trees; no tags	RETAIN AND PROTECT
26	Garry oak	78	14	8	Good	Fair	Yes	Conflict with construction, Large branch dead	REMOVE
27	Garry oak	14	3	2	Good	Good	Yes		RETAIN AND PROTECT
28	Garry oak	16	3	2	Good	Good	Yes		RETAIN AND PROTECT
30	Lawson cypress	24	4	2	Fair	Fair	No	Codominant leaders; included bark	REMOVE
30A	Red cedar	50	6	4	Fair	Good	Yes	Offsite tree; no tag	RETAIN AND PROTECT
30B	Red cedar	50	9	4	Fair	Good	Yes	Offsite tree; no tag	RETAIN AND PROTECT



TREE STATISTICS

Total On-site Trees	22
Bylaw Protected Trees	18
Protected Tree Removals	7
Replacement Trees	7



Tree Protection Fencing Detail
Robust Tree Protection Fencing shall be constructed with a 2x4 frame and supports. (See photo below.) Snow-fencing will then be affixed to the frame using zip-ties, staples wire or nails. All-weather signage will be attached, clearly designating the area within as a TREE PROTECTION AREA - NO TRESPASSING.



PROJECT
**1244 Reynolds Rd,
Saanich, BC**

SHEET TITLE
**Tree Management Plan
Subdivision and Site Servicing Phase**

1	FOR S/D REVIEW	JUN 13/17
REV NO	DESCRIPTION	DATE

PROJECT NO. **16-082**

DATE **March 8, 2017**

SCALE **1:325**

DRAWN BY **LS**

SHEET NO. **T - 1**