

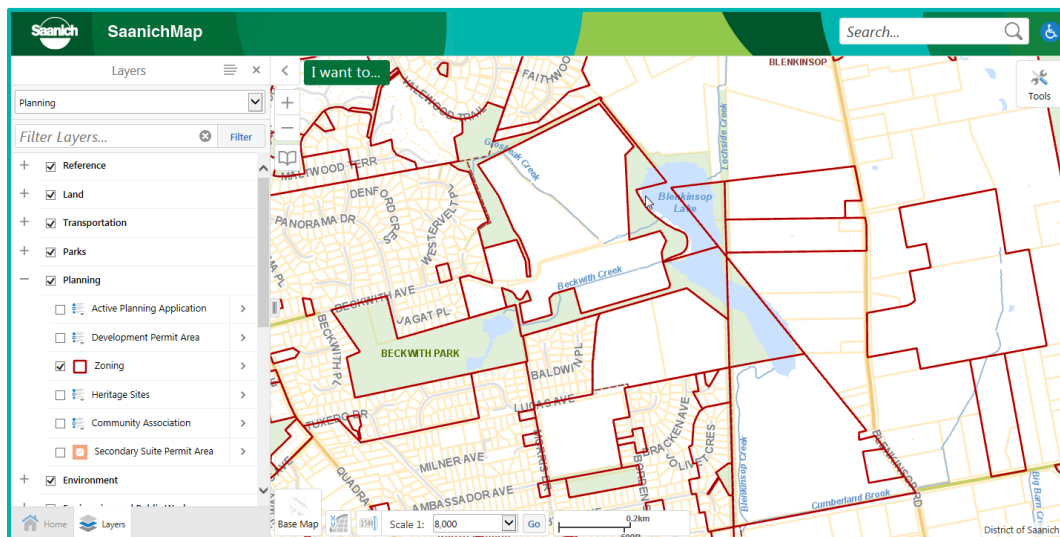
SaanichMap Features



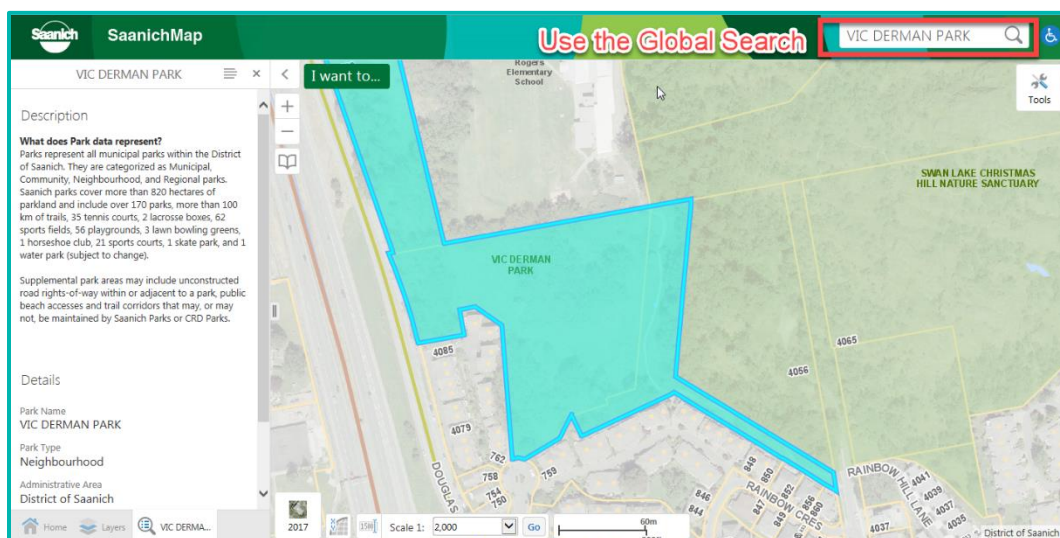
Welcome to SaanichMap

Web-based map viewers enable powerful capabilities for searching, analyzing and sharing information. A central menu provides easy access to commonly requested tasks like viewing the map layers, creating maps and reports, and querying features in the map. Collaborate with others by importing external data into your map or export information to share with others.

Display layers by themes like Parks and Trails, Zoning, Transportation, and Utilities.



Locate features of interest such as an address, school or park location using the Global Search window.



Get detailed property information reports of lot size and location, zoning, school district, tax levies, assessments and more.

Property Information

Report generated 10/30/2019 1:09:53 PM

2661 RICHMOND RD

Folio: 70-0630-000 PID: 000-240-290 Status: ACTIVE	Property Number: 119926 LTO Number: CA7629033 Legal: LOT 1 SECTION 25 VICTORIA DISTRICT PLAN 33390 EXCEPT RENTAL UN ROLL # 70-0630-010 AND 70-0630-020 .
Folio: 70-0630-020 PID: 000-240-290 Status: ACTIVE	Property Number: 119927 LTO Number: CA7629033 Legal: LOT 1 SECTION 25 VICTORIA DISTRICT PLAN 33390 RENTAL UNIT PORT ONLY - SEE ROLL # 70-0630-000 FOR THE MAIN PART.
Folio: 70-0630-010 PID: 000-240-290 Status: ACTIVE	Property Number: 136294 LTO Number: CA7629033 Legal: LOT 1 SECTION 25 VICTORIA DISTRICT PLAN 33390 RENTAL UNIT PORT ONLY - SEE ROLL # 70-0630-000 FOR THE MAIN PART.

Land Attributes

Exemption/ Taxation Code:	BC HYDRO - LAND AND IMPROVEMENTS SUBJECT TO GRANT IN LIEU FULLY TAXABLE LAND, STRUCTURES, ETC
School District:	SCHOOL DISTRICT 61

BCAA Lot Size:	5.51 ACRES
BCAA Manual Class:	60 120 WIDTH/DEPTH 1 STY SFD - AFTER 1930 - STD 1 STY SFD - AFTER 1930 - STD
BCAA Neighbourhood Code:	RICHMOND-MT TOLMIE RICHMOND-MT TOLMIE RICHMOND-MT TOLMIE
Zoning:	SPL SPLIT SPL SPLIT SPL SPLIT
Local Area:	SHELBOURNE
Development Permit Area:	STREAMSIDE
Development Cost Charge Area:	----
Municipal Parks DCC Area:	----
Year Built:	----

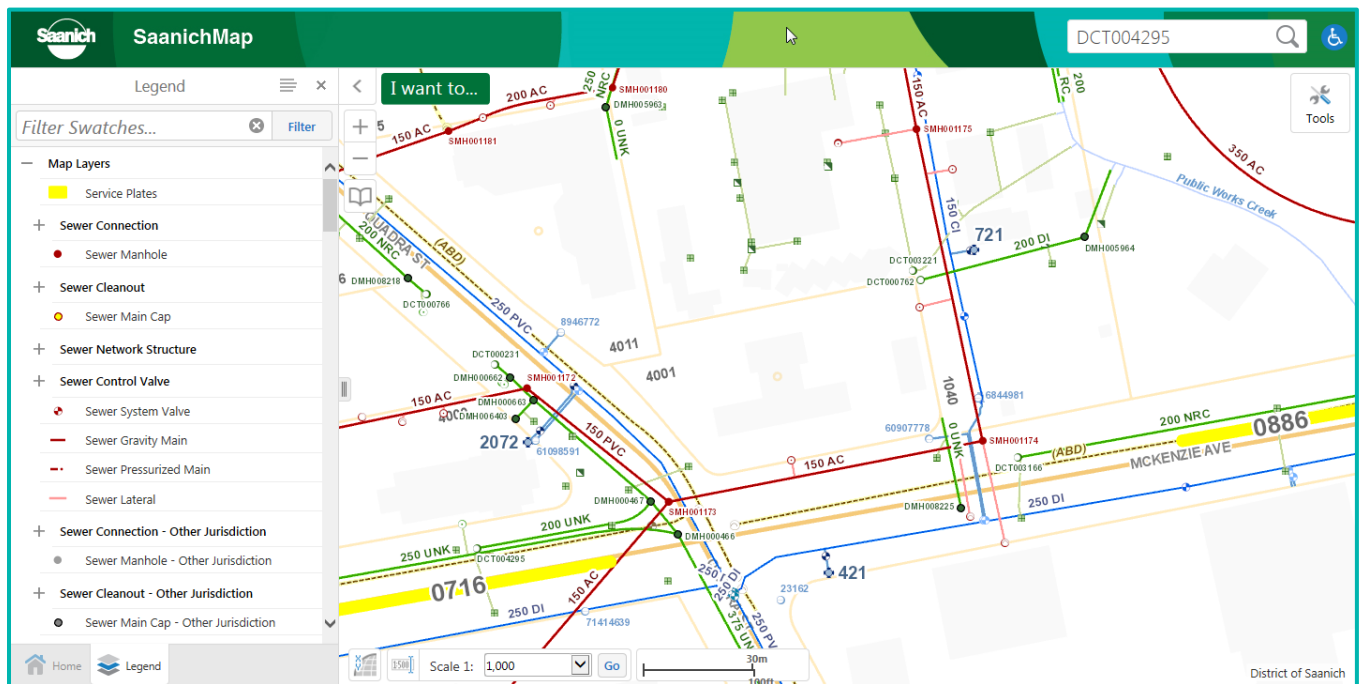
Property Tax Levies and Assessments Summary

Year	Notice Date	Total Levy	Class	Gross Land	Gross Improvement	Gross Assessment	Net Assessment
2019	May 14, 2019	4,845.24	1-Residential	0	74,000	74,000	0
			8-Rec/N-Profit	2,068,000	0	2,068,000	0
2018	May 15, 2018	4,852.50	1-Residential	652,000	0	652,000	652,000
	May 15, 2018	898.85	1-Residential	652,000	73,700	725,700	0
	May 15, 2018	3,174.46	8-Rec/N-Profit	1,941,000	0	1,941,000	0

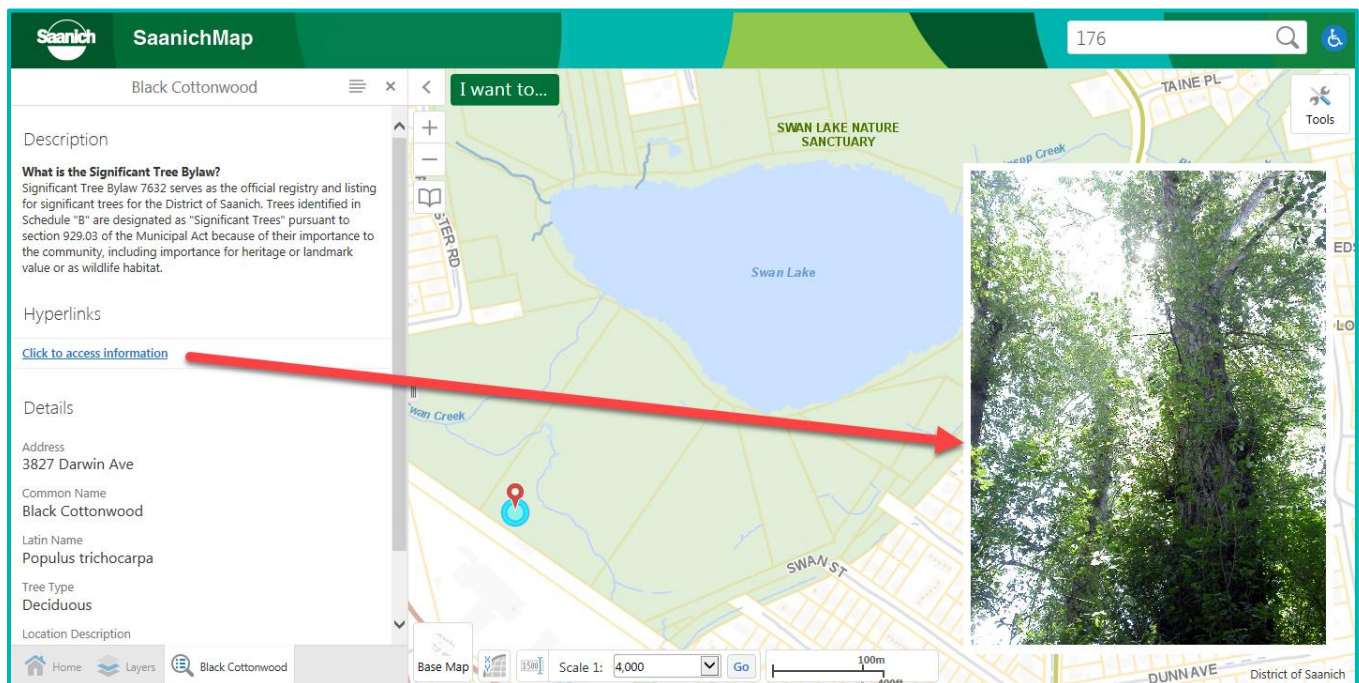
Property Activity

Building Permits: (any)	YES
Engineering Permits: (any)	YES
Active Tree Permits:	NO
Active Development Applications:	NO
Active Business License:	NO
Active Bylaw Calls:	NO
Covenants on File With Saanich:	NO

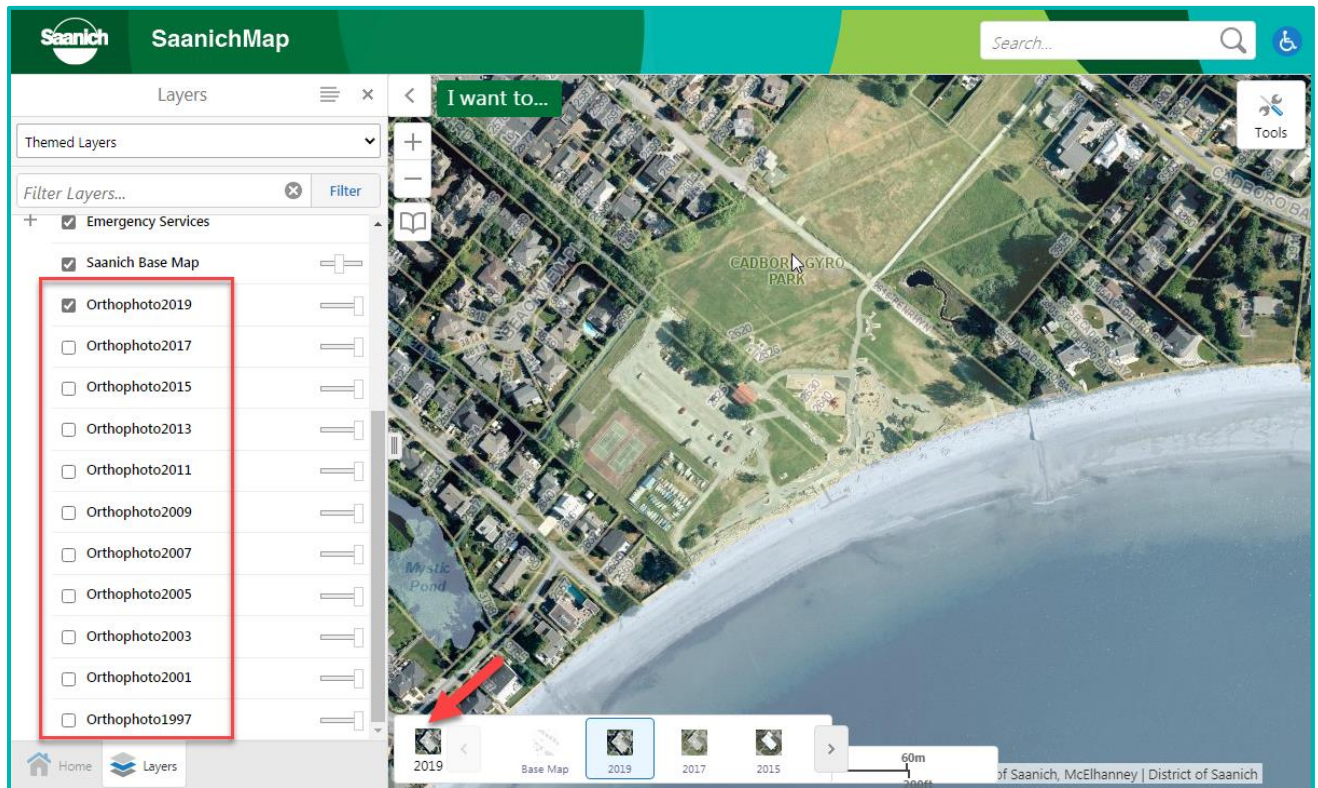
View underground service details such as sewer, storm and water.



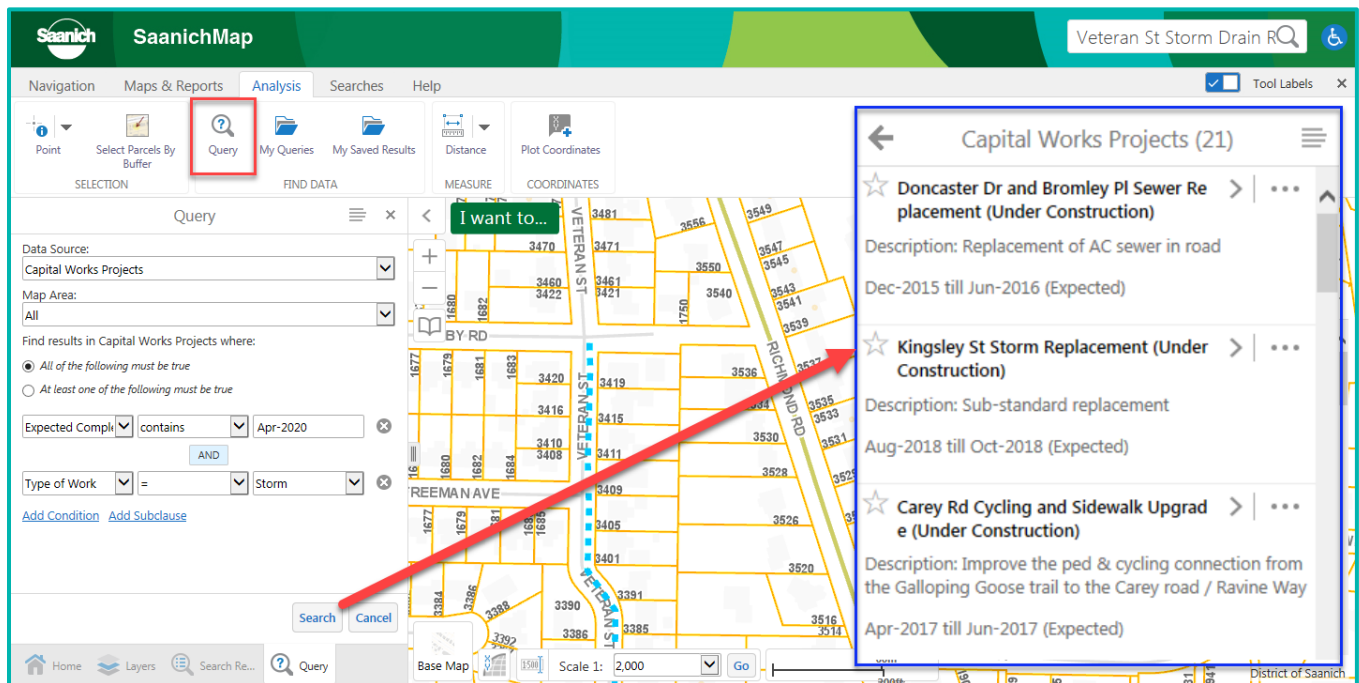
Learn about historical sites, significant trees and trail networks.



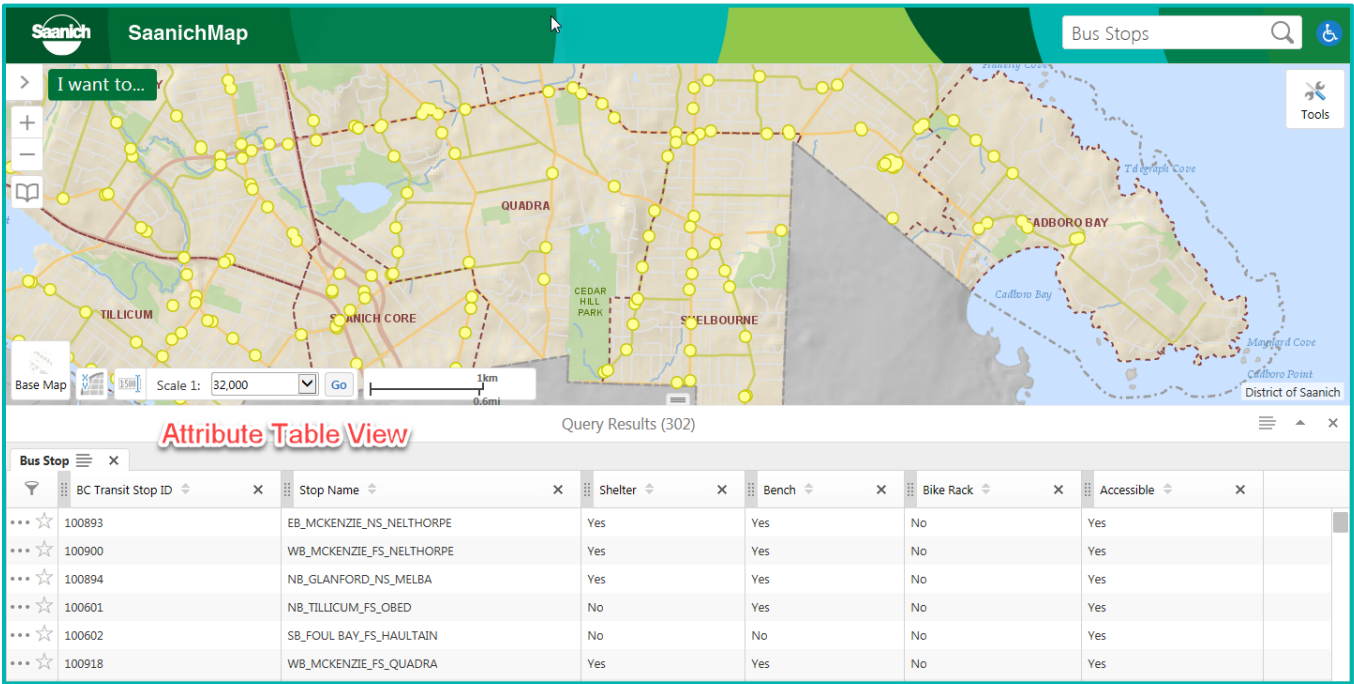
Observe landscape change in a neighbourhood by comparing historical aerial photos dating back to 1997.




Search published Saanich data and perform a query for what you need.





See data in a Tabular View and sort results.



Export tabular or spatial data to share.

 **Export to CSV**
Export results to CSV

 **Export to XLSX**
Export results to XLSX

 **Export to Shapefile**
Export results to Shapefile

Upload data files like Excel, CSV, KML or Shapefile to overlay with data in SaanichMap.

Add Data To Map

Choose files to upload from your computer, and they will become temporarily available on the map.

Supported file types include: .csv, .xlsx, .kml, .shp, .gpx

Note: Large or complex spatial data may impact browser performance.

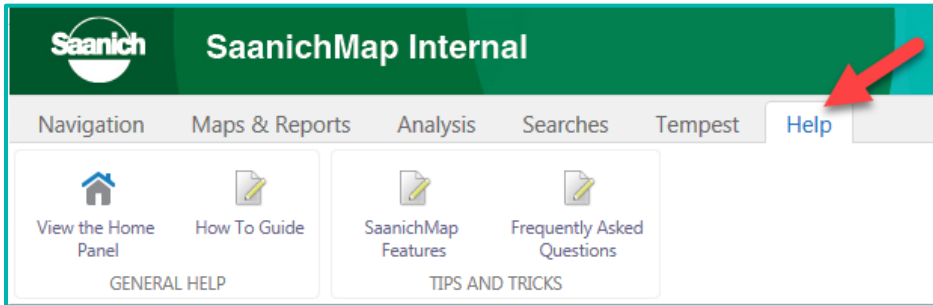
Browse...

Upload

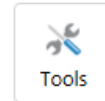
Cancel

Where can I find a detailed 'How To' Guide?

Access the 'How To' guide directly from the **Home Panel** or from the **Help** tab.



Open the toolbar by double-clicking in the green banner area or click the **Toolbar** button in the upper right corner.



How do I submit feedback or get assistance for SaanichMap?

Please email helpdesk@saanich.ca or call 250.475.1775