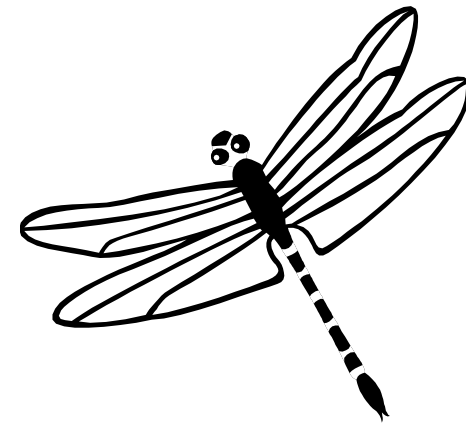
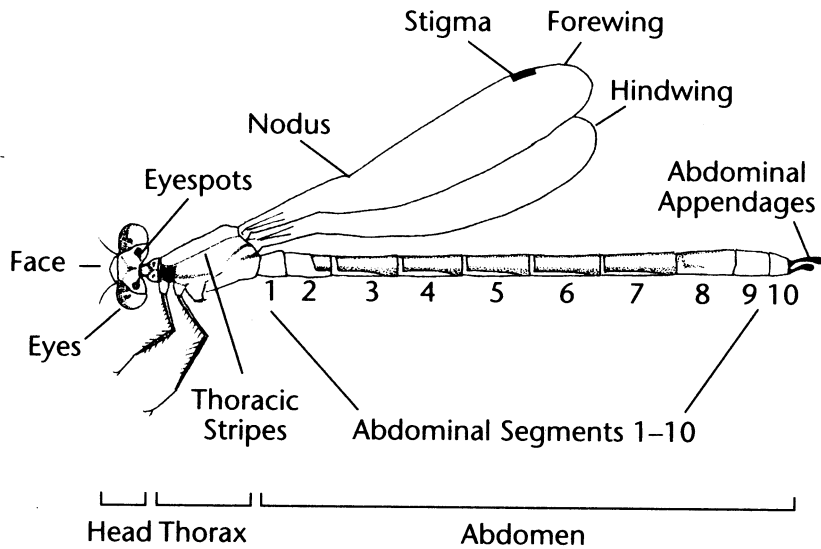


# Checklist to the Dragonflies and Damselflies of the Victoria Region.



July, 2010

1	2	3	4	5	6	7	8	9	10
---	---	---	---	---	---	---	---	---	----

## DRAGONFLIES

### Darners

- Canada Darner
- Lake Darner
- Variable Darner
- Sedge Darner
- Paddle-tailed Darner
- Zigzag Darner
- Shadow Darner
- Common Green Darner
- California Darner
- Blue-eyed Darner

### Spiketails

- Pacific Spiketail

### Emeralds

- American Emerald
- Spiny Baskettail
- Ringed Emerald
- Mountain Emerald

### Skimmers

- Western Pondhawk
- Chalk-fronted Skimmer
- Crimson-ringed Whiteface
- Hudsonian Whiteface
- Dot-tailed Whiteface
- Variable Whiteface
- Eight-spotted Skimmer
- Four-spotted Skimmer
- Blue Dasher
- Spot-winged Glider
- Common Whitetail
- Variegated Meadowhawk
- Saffron-bordered Meadowhawk
- Cardinal Meadowhawk
- Red-veined Meadowhawk
- White-faced Meadowhawk
- Band-winged Meadowhawk
- Striped Meadowhawk
- Yellow-legged Meadowhawk
- Black Saddlebags

## DAMSELFLIES

### Family Aeshnidae

<i>Aeshna canadensis</i>	G5	S5
<i>Aeshna eremita</i>	G5	S5
<i>Aeshna interrupta</i>	G5	S5
<i>Aeshna juncea</i> *	G5	S5
<i>Aeshna palmata</i>	G5	S5
<i>Aeshna sitchensis</i> *	G5	S5
<i>Aeshna umbrosa</i>	G5	S5
<i>Anax junius</i>	G5	S5
<i>Rhionaeschna californica</i>	G5	S5
<i>Rhionaeschna multicolor</i>	G5	S5

### Family Cordulegastridae

<i>Cordulegaster dorsalis</i>	G5	S5
-------------------------------	----	----

### Family Corduliidae

<i>Cordulia shurtleffi</i>	G5	S5
<i>Epiheca spinigera</i>	G5	S5
<i>Somatochlora albicincta</i>	G5	S5
<i>Somatochlora semicircularis</i>	G5	S5

### Family Libellulidae

<i>Erythemis collocata</i>	G5	S3
<i>Ladona julia</i>	G5	S5
<i>Leucorrhinia glacialis</i>	G5	S5
<i>Leucorrhinia hudsonica</i>	G5	S5
<i>Leucorrhinia intacta</i>	G5	S5
<i>Leucorrhinia proxima</i>	G5	S5
<i>Libellula forensis</i>	G5	S5
<i>Libellula quadrimaculata</i>	G5	S5
<i>Pachydiplax longipennis</i>	G5	S3S4
<i>Pantala hymenaea</i>	G5	Acc
<i>Plathemis lydia</i>	G5	S4
<i>Sympetrum corruptum</i>	G5	S5
<i>Sympetrum costiferum</i>	G5	S5
<i>Sympetrum illotum</i>	G5	S4?
<i>Sympetrum madidum</i>	G4	S4
<i>Sympetrum obtrusum</i>	G5	S5
<i>Sympetrum semicinctum</i>	G5	S5
<i>Sympetrum pallipes</i>	G5	S5
<i>Sympetrum vicinum</i>	G5	S3S4
<i>Tramea lacerata</i>	G5	S1

### Spreadwings

- Spotted Spreadwing
- Common Spreadwing
- Emerald Spreadwing
- Forcinate Spreadwing
- Lyre-tipped Spreadwing

### Pond Damsels

- Western Red Damsel
- Northern Bluet
- Boreal Bluet
- Tule Bluet
- Pacific Forktail
- Swift Forktail
- Western Forktail

### Family Lestidae

<i>Lestes congener</i>	G5	S5
<i>Lestes disjunctus</i>	G5	S5
<i>Lestes dryas</i>	G5	S5
<i>Lestes forcipatus</i> *	G5	S4
<i>Lestes unguiculatus</i>	G5	S5

### Family Coenagrionidae

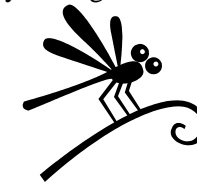
<i>Amphiagrion abbreviatum</i>	G5	S4
<i>Enallagma annexum</i>	G5	S5
<i>Enallagma boreale</i>	G5	S5
<i>Enallagma carunculatum</i>	G5	S5
<i>Ischnura cervula</i>	G5	S5
<i>Ischnura erratica</i>	G4	S4
<i>Ischnura perparva</i>	G5	S5

The G-ranks and the S-ranks listed in this checklist are from the British Columbia Conservation Data Centre (CDC). They give the status of the species globally (G-rank) and the status of the species in British Columbia (the S-rank). Ranks of 1 are for species in the most perilous condition, 5 for species that are secure.

\* are species that are not common in our area despite their overall rank

For more information on BC dragonflies and damselflies there is the provincial museum guide: Cannings R.A. 2002. *Introducing the Dragonflies of British Columbia and the Yukon*. UBC Press, Vancouver BC.

For more extensive information on dragonflies go to the website of the Slater Museum at the University of Puget Sound: [www.ups.edu/x5666.xml](http://www.ups.edu/x5666.xml)



This list is based on an earlier version compiled by Leah R. Ramsay and David F. Fraser that included species for all of Vancouver Island and the Gulf Islands.