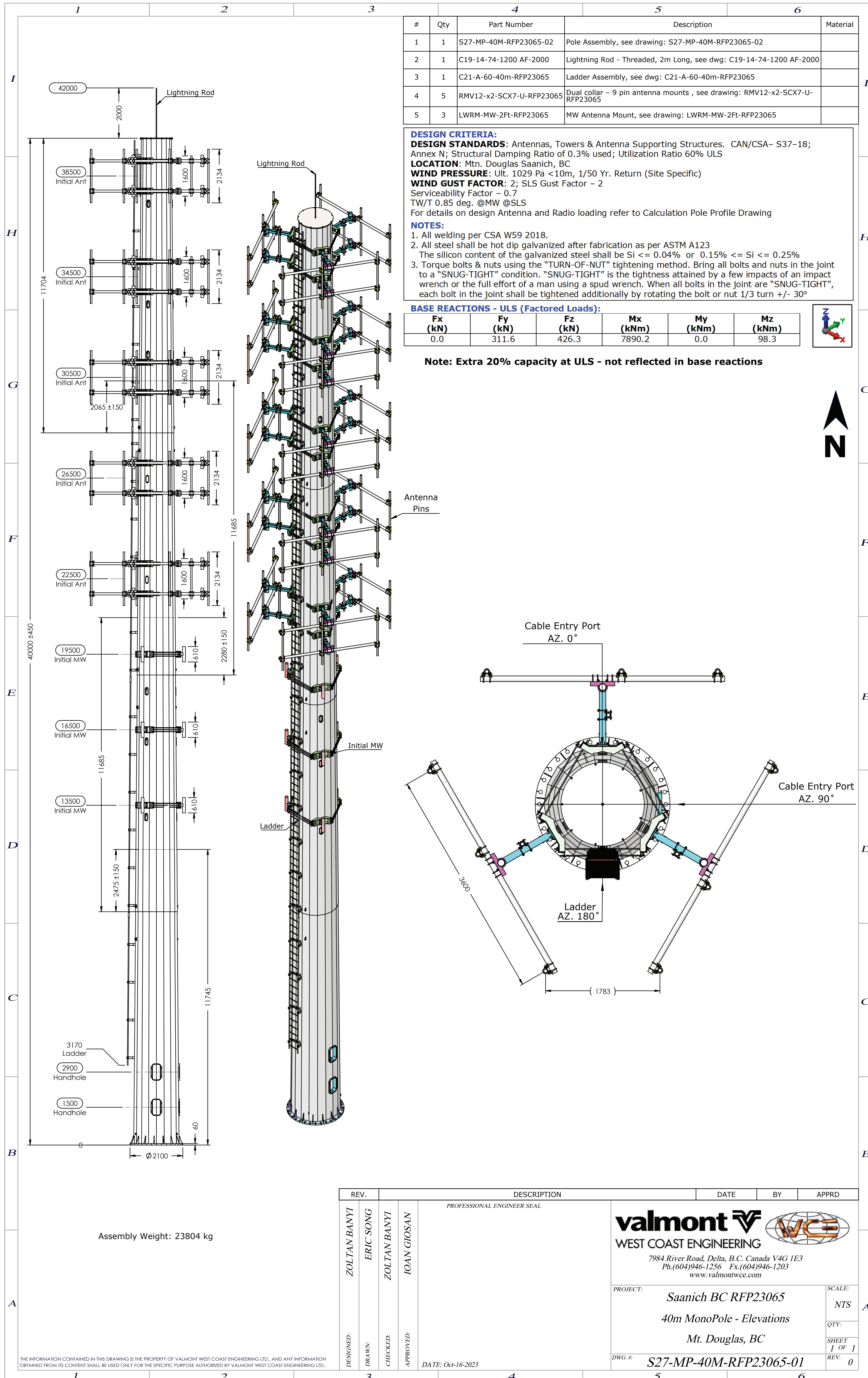




PKOLS Tower Replacement



THE INFORMATION CONTAINED IN THIS DRAWING IS THE PROPERTY OF VALMONT WEST COAST ENGINEERING LTD., AND ANY INFORMATION OBTAINED FROM ITS CONTENT SHALL BE USED ONLY FOR THE SPECIFIC PURPOSE AUTHORIZED BY VALMONT WEST COAST ENGINEERING LTD.

REV.	DESCRIPTION	DATE	BY	APPRD
DESIGNED: ZOLTAN BANYI	  7984 River Road, Delta, B.C. Canada V4G 1E3 Ph.(604)946-1256 - Fx.(604)946-1203 www.valmontwce.com			
DRAWN: ERIC SONG				
CHECKED: ZOLTAN BANYI				
APPROVED: IOAN GIOSAN				
DATE: Oct-16-2023				
PROJECT: Saanich BC RFP23065		SCALE: NTS		
40m MonoPole - Elevations		QTY:		
Mt. Douglas, BC		SHEET 1 OF 1		
DWG #: S27-MP-40M-RFP23065-01		REV: 0		