

2016 Capital Budget Presentation

February 23, 2016



2016 General Capital Budget Expenditures

<u>Asset Type</u>	
Police	1,147,700
Fire	148,900
Emergency Program	55,000
Finance	25,000
Transportation	13,244,900
Drainage	5,802,000
Parks	2,519,100
Recreation	915,600
Fleet Replacement	1,258,000
Information Technology	4,004,000
Community Facilities - expenditure	2,528,700
Community Facilities - reserve fund	1,834,300
Parkland Acquisition	3,842,700
Total 2016	37,325,900

2016 General Capital Budget

Revenue Sources

General Operating (Core Capital)	12,671,100
General Capital Reserves	1,547,700
Lands Sale Reserve	2,000,000
Development Cost Charges	2,842,700
Equipment Replacement Reserve	5,843,700
Grants & Contributions	7,470,700
Borrowing	4,950,000
Total 2016	37,325,900

2016 Capital Budget

Sewer and Water

	Sewer	Water
<u>Asset Type</u>		
Replacement Program	<u><u>5,985,000</u></u>	<u><u>7,320,000</u></u>
<u>Funding</u>		
Operating - user fees	4,485,000	7,320,000
Borrowing	1,500,000	
	<u><u>5,985,000</u></u>	<u><u>7,320,000</u></u>

Infrastructure Sustainability Targets

	2014	2015	2016
Transportation target	8,404,000	8,404,000	8,404,000
Current funding	7,131,000	8,404,000	8,404,000
Drainage target	7,507,000	7,507,000	7,507,000
Current funding	4,580,000	5,159,000	5,802,000
Community Facilities target	4,300,000	4,300,000	4,300,000
Current	2,891,100	3,098,000	3,334,300
Park & Trail target	3,173,000	3,173,000	3,173,000
Current funding	1,627,200	2,023,700	2,381,600
Vehicles Equip Tech target	2,617,000	3,894,000	3,894,000
Current funding	2,475,000	3,719,700	3,823,100
Total Target	26,001,000	27,278,000	27,278,000
Total Current	18,704,300	22,404,400	23,745,000
Shortfall	(7,296,700)	(4,873,600)	(3,533,000)

Infrastructure Sustainability Targets

	2014	2015	2016
Water target	7,177,000	7,177,000	7,320,000
Current	6,560,000	7,177,000	7,320,000
Shortfall	(617,000)	-	-
Sewer target	6,992,000	6,992,000	6,992,000
Current	5,015,000	5,435,000	5,985,000
Shortfall	(1,977,000)	(1,557,000)	(1,007,000)

Capital Budget

Engineering



Eng. Capital Investments



- Municipal Hall
- Fire Halls
- Police Station
- Public Works
- Community Facilities
- Libraries

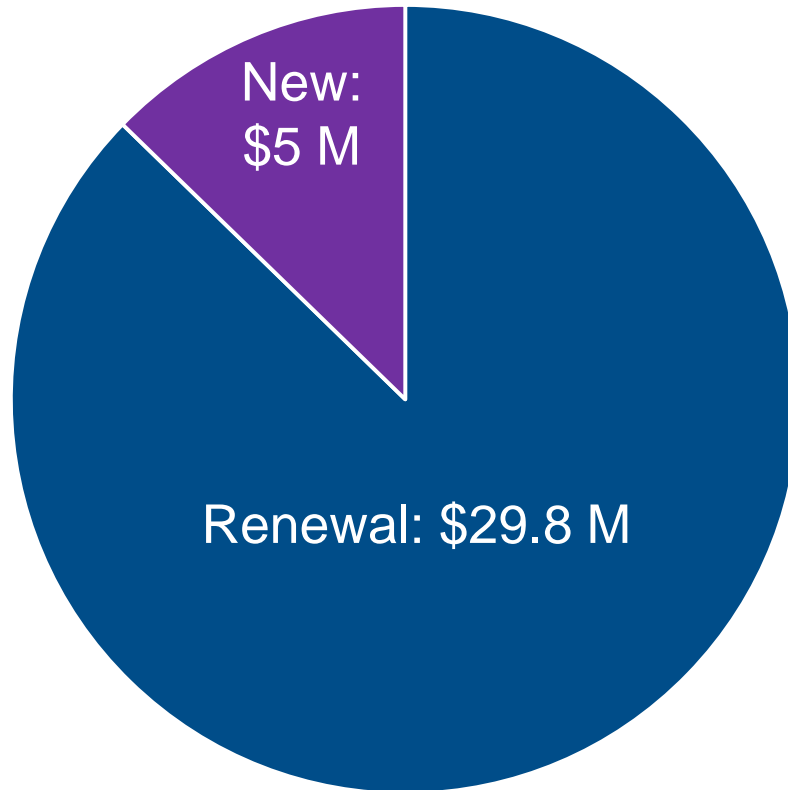


- Sidewalks
- Bike routes
- Traffic Signals
- Bridges
- Roads
- All above ground infrastructure



- Sewer, water, and drain mains
- Pump stations
- Reservoirs
- Service connections
- Fire Hydrants
- All below ground infrastructure

New vs Renewal



Total Engineering Capital \$34.8 M

Facilities

- **Council / Corporate Policies**
 - Saanich Green Building Policy (LEED Silver for New and >500m2)
 - Corporate GHG emissions reduction of 50% by 2020
 - Strategic Plan – F4
 - Library Operating Agreement
- **Guiding Principles**
 - Maintain facilities in acceptable condition
 - Support sustainability initiatives to improve municipal operations targets
 - Accommodate needs to address growth & changing demographics
- **Investment Strategies**
 - Utilize Carbon Fund to improve facility efficiency.

2016 Investment	Asset Value
\$2,528,700	\$168 M

Facilities

- **Renewal (\$2.2 M)**

- Public Safety**

- Ongoing capital maintenance & renovations (e.g. boiler plant efficiencies and fire hall upgrades including gender neutral facilities)

- District Facilities**

- Ongoing capital maintenance (e.g. roof, windows, envelopes, flooring, mechanical and electrical upgrades, boiler plants...)
 - Renovations (e.g. accessibility improvements)

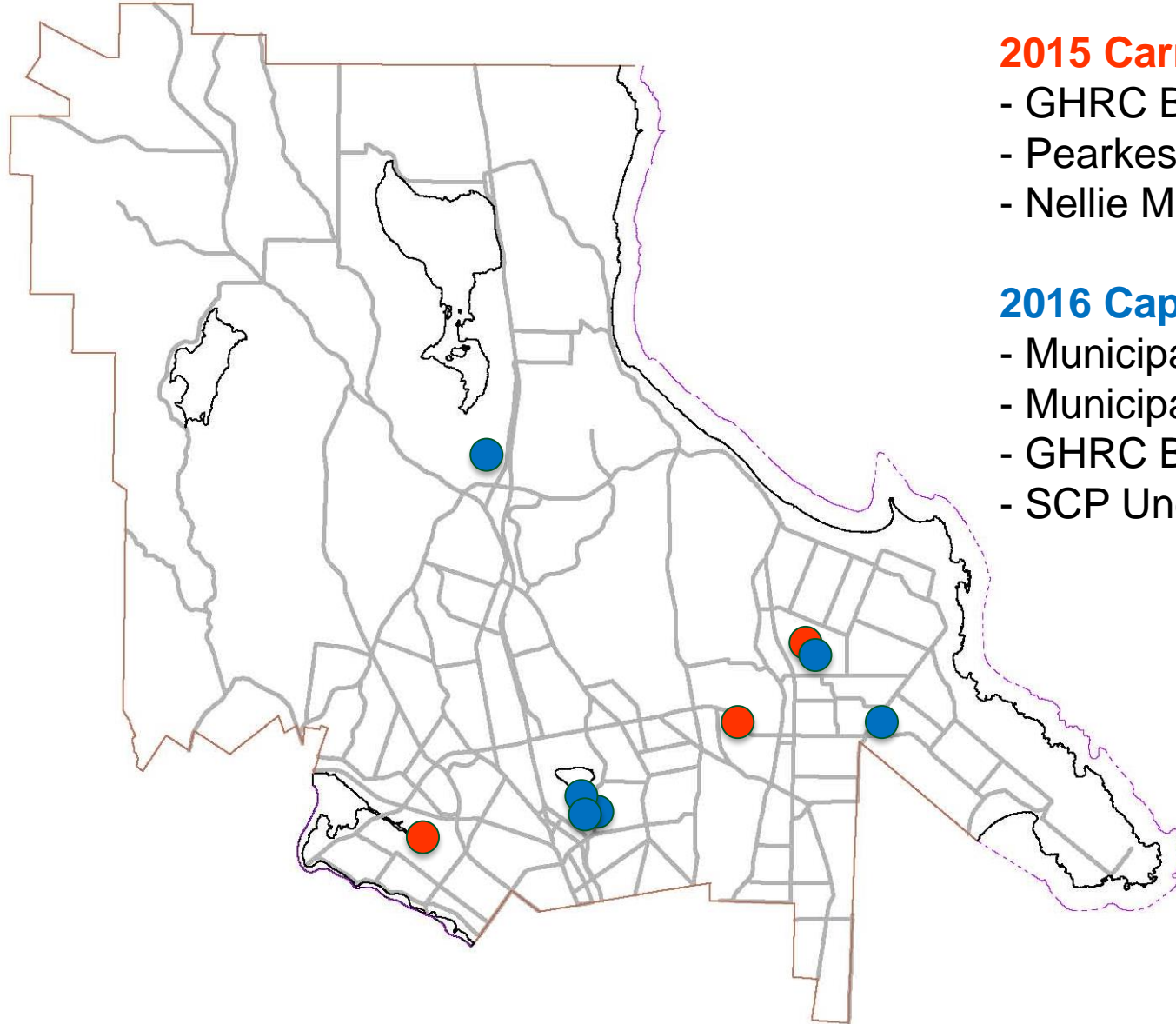
- **Future Replacement Reserve (\$1.8 M)**

- **Facilities Master Plan**

- Facility replacement strategy
 - Critical seismic upgrades
 - Expansion and growth
 - Major repairs needed



Facilities



2015 Carry Forward

- GHRC Building Envelope
- Pearkes Gold Arena Flat Roof
- Nellie McClung Washrooms

2016 Capital Plan

- Municipal Hall Boiler Upgrade
- Municipal Hall Lighting Upgrade
- GHRC Boiler Upgrade
- SCP Underwater Lighting

Transportation

- **Council Policies**
 - Official Community Plan (39 policies)
 - Strategic Plan – C2, C7, F4
- **Guiding Principles**
 - Encourage walking, cycling, and public transit as preferred transportation options
 - Provide safe routes to school
 - Maintain infrastructure in acceptable condition
- **Investment Strategies**
 - Secure grant funding
 - Active Transportation Plan

2016 Investment	Asset Value
\$13,230,900	\$468 M

Transportation

- **Renewal (\$8.2 M)**

- Reconstruct 3 km of sidewalk
- 50 new/upgraded curb ramps
- Upgrade 40 bus stops
- Repave 3.5 km of major roads
- Reconstruct 1 traffic signal
- Replace 20 street lighting poles and 1,000 street lights with LED

- **New (\$5 M)**

- 2 km of new sidewalk
- 4 km of new bike lanes
- 2 new ped crossings w/ beacons



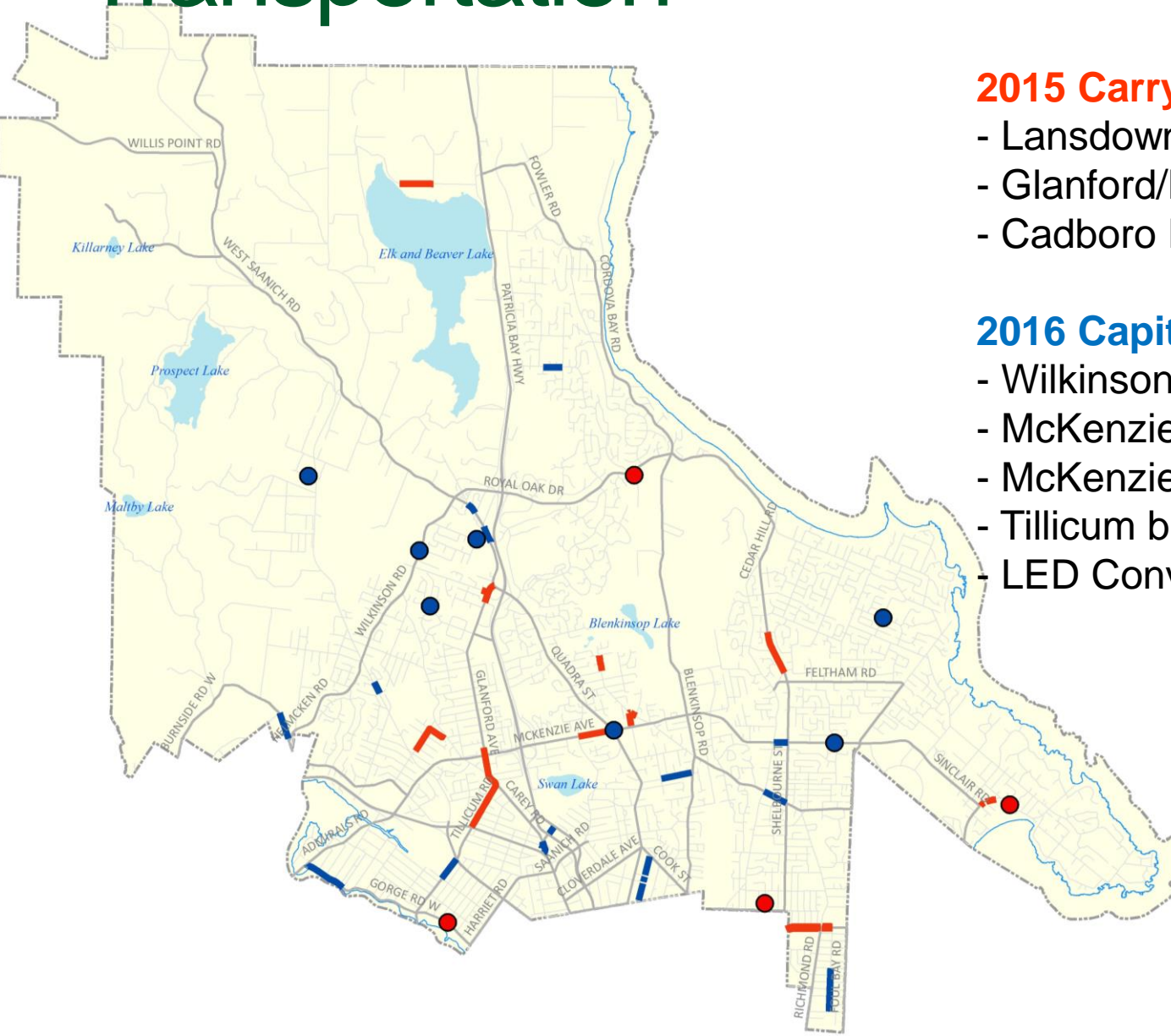
Transportation

2015 Carryforward

- Lansdowne bike lanes
- Glanford/Mann Traffic Signal
- Cadboro Bay sidewalk

2016 Capital Plan

- Wilkinson Bridge
- McKenzie Ave Bike Lanes
- McKenzie/Quadra traffic lights
- Tillicum bike lanes
- LED Conversion Program



Underground Infrastructure

- **Council Policies**
 - Official Community Plan (30 policies)
 - Strategic Plan – C4, F4
- **Guiding Principles**
 - Design resilient infrastructure to address climate change
 - Upgrade/expand infrastructure to address growth
 - Maintain infrastructure in acceptable condition
- **Investment Strategies**
 - Enhance cost-effectiveness through strategic procurement & project planning

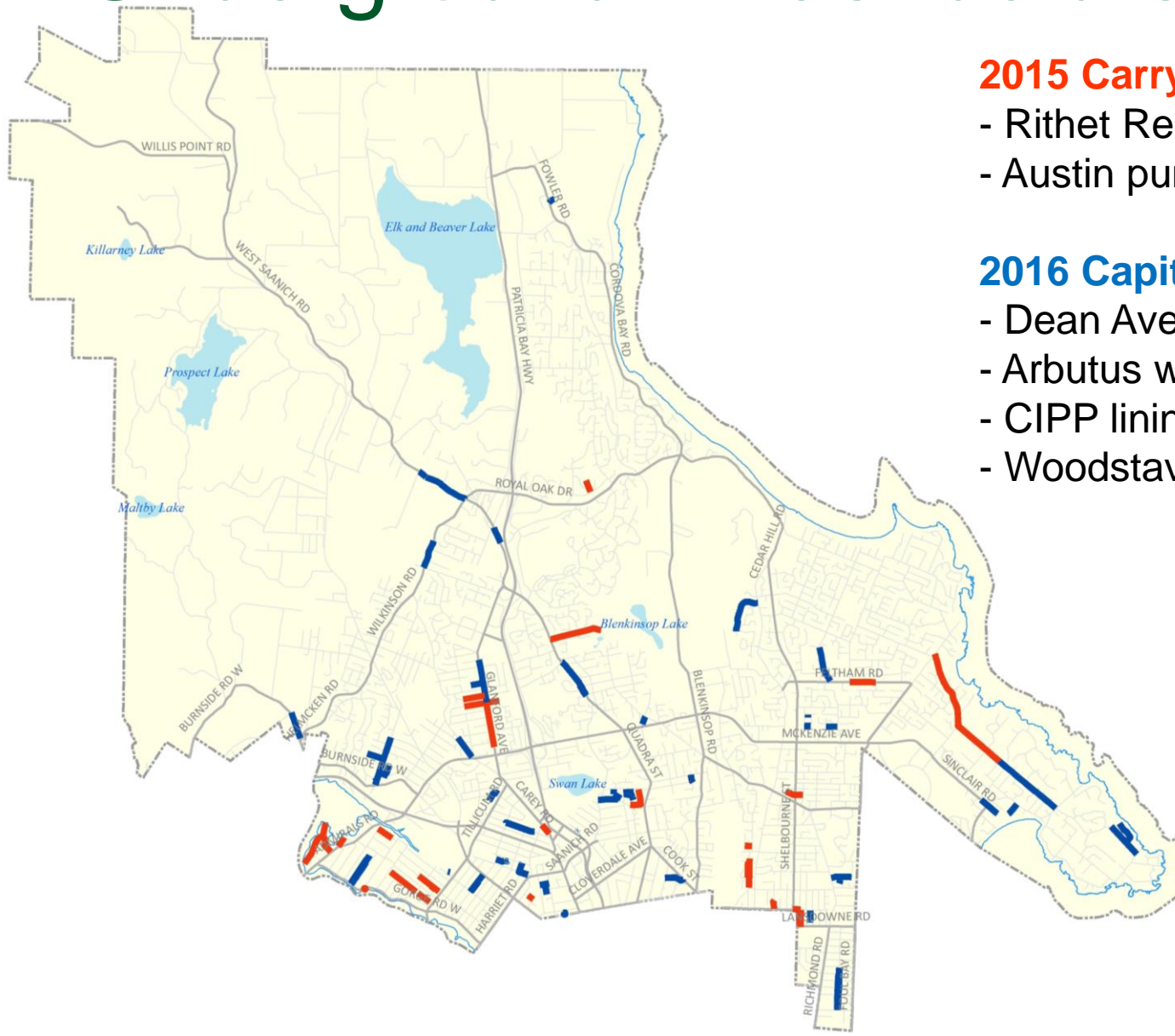
2016 Investment	Asset Value
\$19,107,000	\$1,353 M

Underground Infrastructure

- **Renewal (\$19.1 M)**
 - **Drain: (\$5.8 M)**
 - 2.0 km of woodstave drain
 - 1.5 km of drain main
 - **Water: (\$7.3 M)**
 - 5.9 km of water main
 - **Sewer: (\$6.0 M)**
 - 3.2 km of sewer main
 - 1.4 km of sewer main re-lining
 - 1 sewer pump station



Underground Infrastructure



2015 Carryforward

- Rithet Reservoir
- Austin pump station

2016 Capital Plan

- Dean Avenue Infrastructure
- Arbutus water main
- CIPP lining programs
- Woodstave replacement program



Any questions?

Capital Budget

Vehicles, Equipment and
Technology



Police Vehicles, Equipment and Technology

- Vehicles and Technology on an annual replacement program effective 2015
- Annual 2% core increase
- Building Security and Pre-emption from reserve fund were approved by Council at previous meeting

Fire Vehicles and Equipment

- All Fire Vehicle acquisitions are funded from the Vehicles and Equipment Replacement Reserve.
- Reserve has annual budgeted funding of \$460,000 which handles the fleet's ongoing needs.
- Impact of USD exchange rate

Fleet Vehicles

- All general fleet acquisitions are funded from the Vehicles and Equipment Replacement Reserve.
- Reserve has annual budgeted funding of \$650,000 which handles all of the fleet's ongoing needs.
- Replacement needs are analyzed in great detail by the fleet manager.

Parks & Recreation Equipment

- Annual replacements from core and reserves
 - Fitness equipment
 - Golf course grounds equipment
 - Parks equipment for urban forestry and construction/maintenance sections

Finance/Engineering Equipment

Capital Budget

Technology



Principles

Council

- Sustainable replacement of aging infrastructure by 2019
- Implementation of key Strategic Planning initiatives

IT Division

- Maintain integrity and security of large, complex system which also contains elements of personal information
- Maintain functionality of products and services
- Average life cycle of hardware and software of 3-5 years
- Maintain compliance with licensing and maintenance
- Projects managed as multi-year initiatives to address resource availability, best practices and impact on organization

Strategic Plan Initiatives

– IT Related

Service Excellence –

- Deliver the next generation of the Saanich website (P1)
- Implement business technology resource planning (P3)
- Integrate and Improve the management of electronic records (L2)
- Implement asset management (L2)
- Strengthen information technology foundation (L2)
- Implement webcasting of Council meetings (L2)

Life Cycle and Costing

Three distinct phases:

1. **Assessment** of needs and scope of project followed by **Design and Planning** for resources, budget, interdependencies with other systems and creation of RFP
2. **Awarding** of RFP, creating contractual agreement with vendor followed by **construction and installation**
3. **Maintenance** of asset and work; budgeting towards **replacement** and return to phase 1

Assets

- IT Infrastructure – End user, systems and other tools that support all of the computer applications, security and data storage for 9 locations as well as mobile and remote access
- Business Systems - Core systems upon which the entire organization depends to meet legal, statutory, business and citizen requirements
- New Assets / Projects as identified in Council's strategic plans

Capital – IT Infrastructure

Servers

2015 Approved Funding - \$1,050,000

2016 Capital Plan - \$ 750,000

- Project in progress for full infrastructure replacement, 2016 sees additional work on disaster recovery, storage, systems tools and security items

Network

2015 Approved Funding - \$ 100,000

2016 Capital Plan - \$ 1,000,000

- Project in progress, 2016 projects include connectivity for applications and services, security and privacy and enables disaster recovery

Capital – IT Infrastructure

Phone

- 2015 Approved Funding - \$1,000,000
- 2016 Capital Plan - \$0
- Project in progress with assessment phase and high level options complete, departments requirements analysis to be undertaken with anticipated completion during 2017 after installation of the network

Capital – Business Systems

Core System upgrades

2015 Approved Funding - \$ 645,000

2016 Capital Plan - \$2,100,000

- Systems being upgraded (either major and minor) include
 - JDE (financial software)
 - Website (Saanich.ca)
 - Tempest (Property management)
 - Fire Dispatch / Ecomm system
 - GIS
 - CLASS (recreation software)
 - Payroll

Capital – New Assets / Projects

New Assets

2015 Approved Funding - \$199,000

2016 Capital Plan - \$ 50,000

- Additional systems (each in the assessment phase) being added to asset base
 - Webcasting
 - Agenda Management
 - Asset Management



Questions?

Capital Budget

Parks & Recreation



P&R Capital Investments



Parks &
Trails

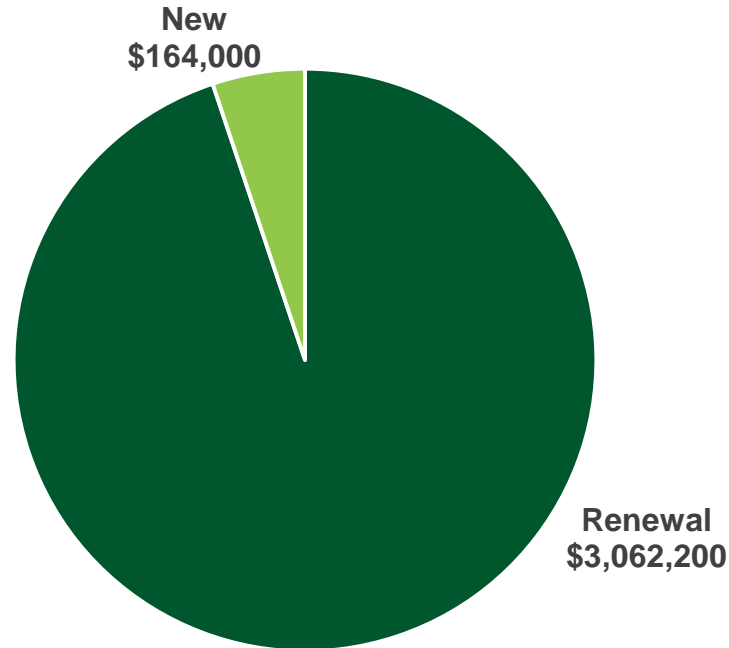
Beach Accesses
Buildings & Structures
Irrigation
Signage
Sports Fields
Trails



Recreation

Golf Course
Recreation Centres

New vs Renewal



Total 2016 Parks & Recreation Capital - \$3,226,200

Park & Trail Structures

- **Council / Corporate Policies**
 - Parks, Recreation & Culture Master Plan – EI 3
 - Strategic Plan – F4
- **Guiding Principles**
 - Maintain facilities in acceptable condition
 - Accommodate needs to address growth & changing demographics
- **Investment Strategies**
 - Capital budget (core, reserves, borrowing)

2016 Investment

\$2,381,600 Capital Works

\$3,842,700 Land Acquisition Reserve

Park & Trail Structures

- **14 categories or projects**

- Playground Replacement	- Tolmie Park
- Prospect Lake Tennis Courts	- Streetscape Renovations
- Parking Lot Renewal	- Cuthbert Holmes
- Bridges & Structures	- Natural Area Restoration
- Trails	- Urban Forest Tree Planting
- Layritz Park	- Mount Douglas Park
- Markham Road Nursery	- Signage

Recreation Facilities

- **Council / Corporate Policies**
 - Continued focus on pro-longing life of existing facilities
- **Guiding Principles**
 - Maintain facilities in acceptable condition
 - Accommodate needs to address growth & changing demographics
- **Investment Strategies**
 - Capital budget (core, reserves)

2016 Investment

\$844,600 Capital Works

Recreation Facilities

- **Various projects across the 4 recreation centres and golf course**

- Pearkes (field house roof, flooring replacements)	- SCP (underwater lighting, lower lobby floor replacement)
- CHRC (glaze room ventilation, main facility sign replacement)	- GHRC (hardwood floor refinishing, emergency generator replacement)
- CHGC (club house HVAC, grounds shed improvements)	



Questions?