

**AGENDA**  
**Parks, Trails and Recreation Advisory Committee**  
**Saanich Municipal Hall, Committee Room #2**  
**Thursday September 29, 2016, 7:00-9:00 p.m.**

---

- 1. ADOPTION OF MINUTES** (attachment)
    - June 23, 2016
  - 2. LGBTQ COMMITTEE AND THE PARKS AND RECREATION INCLUSION STATEMENT** (attachment)
    - Committee discussion on feedback from the LGBTQ Committee
  - 3. UPTOWN-DOUGLAS CORRIDOR PLAN**
    - Presentation from Planning
  - 4. MOUNT DOUGLAS ROTARY PLAQUE** (attachment)
    - Presentation from Parks
  - 5. CAPITAL PROJECT PLANNING** (attachment)
    - Presentation from Parks
  - 6. SUMMER 2016 OVERVIEW** (attachment)
    - Program report
  - 7. IVOR ROAD ACQUISITION** (attachment)
    - Presentation
  - 8. DIVISION UPDATE, PARKS** (attachment)
    - Update from the Parks Department
  - 9. DIVISION UPDATE, RECREATION** (attachment)
    - Update from the Senior Manager, Recreation Service
  - 10. CORRESPONDENCE** (attachment)
    - Stormwater Detox-D. Chambers
- \* Adjournment \*

**\*\*Next Meeting: September 29, 2016\*\***

Please advise Elizabeth at [Elizabeth.vandenhengel@saanich.ca](mailto:Elizabeth.vandenhengel@saanich.ca) or  
475-5494 local 3430 if you are unable to attend.

**Go Green!**  
**Members are encouraged to bring their own mug to the meeting**

**MINUTES**  
**PARKS, TRAILS AND RECREATION ADVISORY COMMITTEE**  
Held at the Saanich Annex, Learning Centre  
**September 29, 2016 at 7:00 PM**

Chair: Susan Brice

Members: Ted Austin; Terrance Berscheid, Pamela Carroll; Daryl Dagneault; Warren Ellam; Tom Hatcher; Dave Marecek; Stefanie Yao, Dex Owen (Student Liaison)

Staff: Suzanne Samborski, Director of Parks and Recreation; Kelli-Ann Armstrong, Senior Manager, Recreation Services; Eva Riccius, Senior Manager Parks; Elizabeth van den Hengel, Committee Clerk

Regrets: Rick Paynter (SD 61 representative)

Guests: Colleen Hobson, Executive Director, Saanich Neighbourhood Place; Corinna Bays, Early Childhood Educator, Saanich Neighbourhood Place

---

**MINUTES**

**MOVED by D. Dagneault and Seconded by T. Berscheid "That the minutes of the Parks, Trails and Recreation Advisory Committee meeting May 28, 2016 be adopted as circulated."**

**CARRIED**

**SAANICH NEIGHBOURHOOD PLACE CHILDCARE CENTRE**

The Executive Director and Early Childhood Educator, Saanich Neighbourhood Place provided the Committee with updates on the proposed new childcare centre. The following was noted:

- Two rounds of public participation events have been held to date.
- Currently Saanich Neighbourhood Place has secured \$1.25 million in funding towards the construction of the new childcare facility.
- Currently 70 family are signed up on the interest list.
- The building has been repositioned into the parking lot area to reduce the impact on greenspace.
- This parking lot is currently not well utilized.
- The proposed childcare centre is approximately 7500 square feet. The building has been designed as a multiuse facility.
- An outdoor nature play space is planned for the children.
- The area for the proposed centre is currently zoned for health and recreation.

**NEW CRD WATER CONSERVATION BYLAW #4099 AND THE BC DROUGHT SITUATION**

The Director of Parks and Recreation provided the Committee with an overview on the new CRD water conservation requirements and the following was noted:

- Saanich Parks maintains over 150 automated irrigation systems within parks and boulevards.

- Many of these irrigation systems are outdated and inefficient by today's irrigation standards.
- The irrigation systems that are not in compliance with the new CRD bylaw will be tracked and given priority for replacement or repair.

#### **DIVISION UPDATE, PARKS**

The Senior Manager of Parks, provided a Division update.

#### **DIVISION UPDATE, RECREATION**

The Senior Manager, Recreation Services, provided an update.

#### **ADJOURNMENT**

The meeting adjourned at 8:57 p.m.

#### **NEXT MEETING**

The next meeting is scheduled for September 2016.

\_\_\_\_\_  
Chair

I hereby certify these minutes are accurate.

\_\_\_\_\_  
Committee Secretary

**THE COROPORATION OF THE DISTRICT OF SAANICH**

**TO:** PARKS, TRAILS AND RECREATION ADVISORY COMMITTEE  
**FROM:** KELLI-ANN ARMSTRONG, SR. MANAGER – RECREATION SERVICES  
**SUBJECT:** Recommendation from LGBTQ Sub-Committee  
**DATE:** September 22, 2016

---

In the fall of 2015, Saanich Council approved the creation of a one year LGBTQ Sub-Committee of the Healthy Saanich Advisory Committee. The purpose of the sub-committee is to advise the District "...on LGBTQ issues, and suggest initiatives to improve the quality of life for Saanich LGBTQ residents" (Terms of Reference).

At a recent sub-committee meeting, the Parks and Recreation inclusion statement was reviewed,

*Saanich Parks and Recreation provides a welcoming environment, supporting the inclusion of people with disabilities, social and financial accessibility and cultural diversity.*

and the following change was suggested by the sub-committee:

*Saanich Parks and Recreation provides a welcoming environment that supports social and financial accessibility, cultural diversity and people of all abilities, and genders and sexualities.*

The sub-committee would be appreciative if the Parks, Trails and Recreation Advisory Committee would review the proposed change, and approve the suggested wording to include recognition of the LGBTQ community.

**Report Submitted By:**



Kelli-Ann Armstrong, Senior Manager, Recreation Services

# REPORT

**TO:** Parks, Trails, and Recreation Advisory Committee

**FROM:** Eva Riccius, Senior Manager, Parks

**DATE:** September 19, 2014

**SUBJECT:** The Mount Douglas Summit Rotary Historical Point of Interest Marker

---

In the late 1950's, the Rotary Club of Victoria undertook a project to provide a lookout at the summit of Mount Douglas Park. It was completed in 1960 when the park was under the jurisdiction of the City of Victoria and managed by the Victoria and Saanich Beaches and Parks Committee. To acknowledge the donation, the Rotary emblem was incorporated into the marker. The lookout still stands and is a popular feature for visitors to the summit.

A key design element of the lookout was a large bronze cast geographical marker mounted on a raised concrete pedestal in the center of the lookout (Attachment A). The Rotary emblem is at the centre of the marker.

The geographical marker disappeared many years ago and a replacement marker was installed (in approximately 1980) prior to the park coming into Saanich's jurisdiction in 1992. The new marker differed from the original in that it corrected a few minor geographical errors, indicated distances in metric instead of imperial distances and did not include the Rotary emblem. Years passed and the Rotary marker re-appeared on the Rotary office steps several years ago (unconfirmed 2002).

With the re-appearance of the original bronze marker, the Rotary Club expressed a desire to have it re-installed at the summit lookout. Not necessarily in its original location atop the pedestal, but somewhere close in recognition of the Rotary Club's role in the creation of the summit lookout.

A previous effort by the Rotary Club in 2007 to have the marker placed in the park was abandoned due to concerns expressed by the Friends of Mount Douglas Park. At that time the effort focused on mounting the marker on top of a new 90cm high stone pedestal at the Summit parking lot.

In 2014, under new leadership, the Rotary Club once again approached Saanich Parks expressing a desire to have the marker re-installed as a historical point of interest nearer to its original location at the summit lookout. Over the next several months, staff considered options and discussed them with representatives of the Rotary Club. The preferred option was mounting the marker and a small descriptive plaque on the interior concrete wall of the lookout (Attachment B). The bronze geographical marker currently atop the pedestal would remain in this location. The Rotary Club felt this approach was the best option in that it respected the current marker and ambassadors of the park

while reinstating the original marker close to its original location. This would satisfy Rotary Club's request to have Rotary Club's past contribution to the design, funding and construction of the visitor lookout recognized.

Acknowledging there had been some concerns raised by the Friends of Mount Douglas Park (the Friends) regarding the re-installation of the marker, staff contacted the Friends to apprise them of Rotary Club's request. The District of Saanich and the Friends have a long standing relationship and have undertaken many successful projects together.

Through numerous conversations, discussions, meetings, emails and letters between the three parties since the fall of 2014, it appears the Friends of Mount Douglas Park have the following concerns in relation to the re-installation of the marker as a historical point of interest:

- It sets an inappropriate precedent in the natural setting of the park
- It is primarily a recognition plaque for funds donated 55 years ago
- Lack of policy for plaques other than commemorative benches
- The marker serves no benefit to park users
- Other opportunities may exist to recognize the Rotary Club's contribution

In December 2015, a further compromise was suggested which is to install just the Rotary Wheel from the plaque on the bottom left corner of the entrance of the lookout. The Rotary Club noted that at the time they were 'agreeable, to this as part of the solution, however, remained steadfast in their preference to have the entire plaque installed in the lookout.

It is our understanding that the Rotary Club is not supportive of the Rotary Wheel installation as a full solution and remains interested in seeing the plaque returned as is to the inside of the lookout as previously proposed.

The District of Saanich has numerous examples of where it has celebrated and acknowledged past contributions from individuals and organizations. The Rotary Club is recognized at Saanich Commonwealth Place, Normandy Park, Pearkes Arena and Mount Tolmie. The Saanich Baptist Church is recognized for its fundraising efforts at the Copley East playground. Funders such as the Pacific Salmon Foundation are acknowledged on various signs along the Colquitz River and in Mount Douglas Park. The Friends of Mount Douglas are recognized on the entrance sign to Mount Douglas Park.

### **Summary:**

The lookout summit is an important amenity at Mount Douglas Park; The Rotary Club was instrumental in its creation. It is staff's belief that placing the historical bronze cast along with an explanation in the inside of the concrete structure as a historical point of interest to recognize the Club's past contribution is a reasonable compromise.

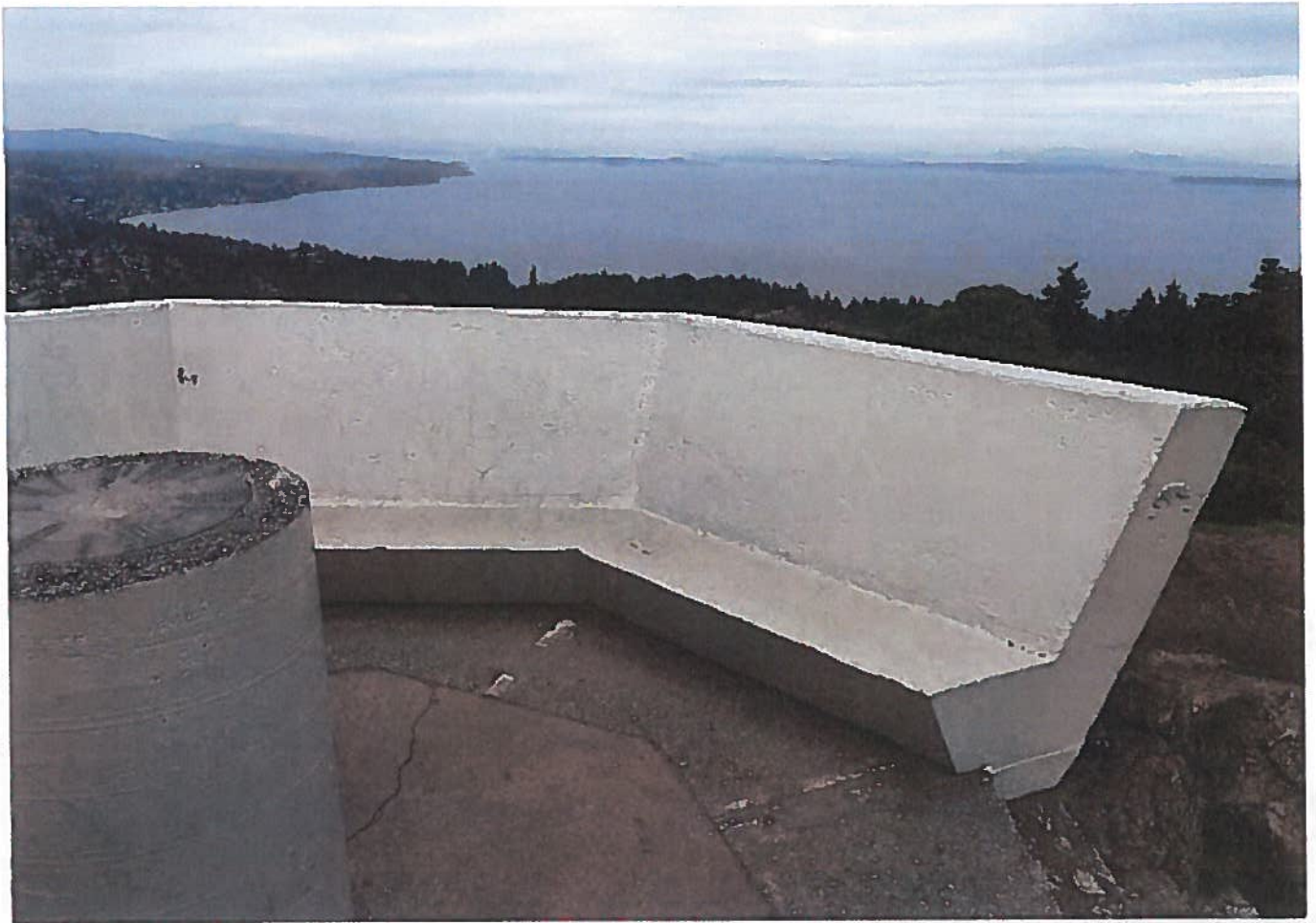
This placement would not set any negative precedents regarding the protection of the park's natural environment or the recognition of other organizations in Mount Douglas Park or any other Saanich Park.

**Recommendation:**

That the Parks, Trails and Recreation Advisory Committee recommend to Council to direct staff to return the historical Rotary marker to the summit of Mount Douglas Park on the inside of the lookout as a historical point of interest.

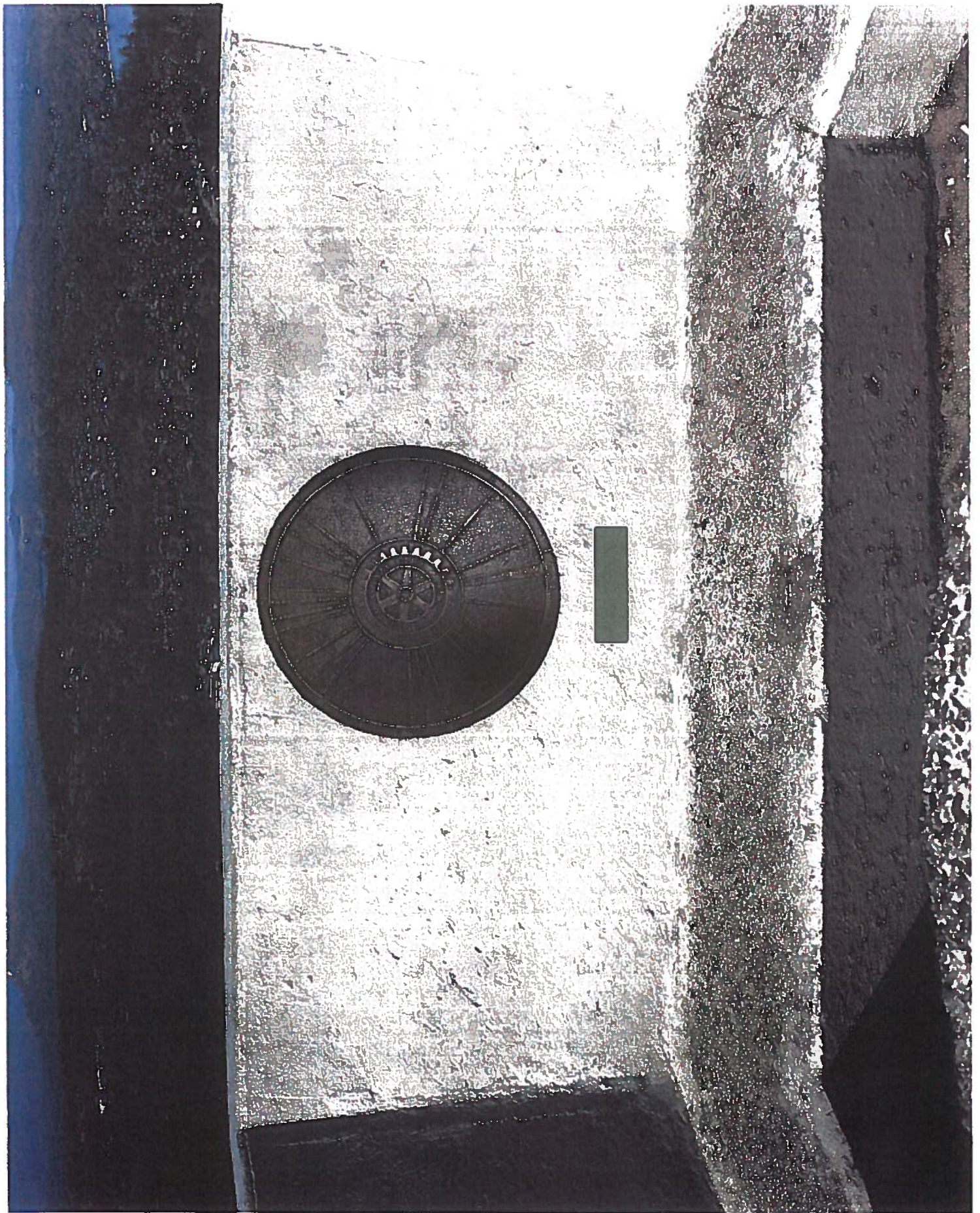
G:\Parks\PLANNING AND DESIGN\PROJECTS\Mt. Douglas\Rotary Plaque\PTR Report Sept2016.docx





Item 4





Item 4



## **GUIDELINES FOR COMMUNITY DRIVEN CAPITAL PROJECTS**

The District of Saanich has a strong history of partnering with community groups to deliver capital projects in Saanich Parks and Recreation facilities to enhance recreational experiences. Some examples include: field and club houses for sports groups, indoor racquet sports facilities, community gardens, artificial turf fields, lighting for sports fields, etc. In these cases, community groups contributed to the capital projects and assist in maintaining the assets. All capital assets on park lands are owned by Saanich regardless of who established and manages the asset.

As Saanich grows, the demands for municipal parks and recreation facility uses will also expand. The Parks and Recreation Department supports the development of community driven capital projects that develop and improve facilities that serve the community. These guidelines seek to provide clarity for community groups, staff and the public regarding the process to determine the feasibility of a community driven capital project and expectations of the parties involved if projects are supported. To ensure that community groups are treated equitably in the analysis and development of projects, Saanich Parks and Recreation will work with the community using the following process. The guidelines will be reviewed from time to time to ensure that they are fulfilling their need.

## **APPLICATION OF THE GUIDELINES**

These guidelines apply to major capital projects (generally over \$10,000) for new facilities and expansions on Saanich owned or leased property that result in a fixed asset (such as a building, sportsfield, sports facility, community garden, etc.). Renovations to existing facilities may be exempt if they do not create a significant change in use and no significant impacts to park users and neighbours. Please check with the appropriate Parks and Recreation staff for confirmation.

Community partners must be legally constituted, incorporated non-profit organizations such as, but not limited to:

- Community associations,
- Sports organizations
- Clubs.

Note: Capital budgets are developed in the summer and fall of the previous year with Council approvals in April/May. To ensure efficiency in timing, projects are best proposed in the winter/spring one year prior to budget approvals by Council. For example, a new project proposed in Spring of 2016 could be considered in capital budgeting in the Fall of 2016 for Council approval in Spring of 2017 which could allow for project start in Summer/Fall of 2017 as long as all the relevant requirements were in place.

## **PRINCIPLES**

The following principles will be applied to projects:

- Facilities developed with District funding and/or on District land must be open and accessible to all residents of Saanich.
- Projects will only be considered for approval where they are supported by a business plan that indicates that the completed project is sustainable over the long term.
- Any projects that require capital funding from the District are subject to the availability of funding within the Department's capital budget.

- Costs eligible for cost sharing (typically up to 50%) include:
  - Concept and detailed design costs,
  - Construction costs including contingencies,
  - Site development costs,
  - Development and building permits,
  - Fixed equipment.

## STEP 1 – DETERMINING PROJECT FEASIBILITY

A community organization or group considering a community driven capital project that would be constructed on District land and/or require the District's financial assistance, is to present its idea to the Parks, Trails and Recreation Advisory Committee (PTR). If PTR determines that the project is in the community's and District's interest and helps achieve the goals of the District, staff will be asked to work with the community group to develop a project charter outlining the proposed public process, preliminary budget, alignment with strategic directions of the District and Department (e.g. Saanich Strategic Plan, Parks, Recreation and Culture Master Plan). Large or potentially controversial projects may be referred to Council for approval in principle at this stage.

**Result of Step 1:** a project charter that outlines the project in more detail including a preliminary budget, proposed roles and responsibilities and proposed public process.

## STEP 2 – APPROVAL IN PRINCIPLE

The community organization will return and present the project charter to PTR for approval in principle. The presentation will include:

1. A description of the project and its benefit to the community; including reference to community master plans, if applicable.
2. A conceptual drawing and a site plan.
3. An estimated project budget including all funding sources (cash, grants, loans, donations and volunteer hours) and any financial assistance that is being requested from the District.
4. An estimated operating budget and how the project will be operated and/or maintained.
5. A detailed fundraising plan.
6. An estimated project timeline.
7. A public engagement plan based on IAPP standards at the appropriate level (see attached table).

Based on the project charter, PTR will make a recommendation regarding the project. If the project feasibility phase is recommended by PTR, then a report will be provided to Council outlining the scope of the project, and the implementation process. District support will be subject to approval by Council.

**Result of Step 2:** Based on the information provided, a recommendation from PTR to Council to approve in principle or not.

## STEP 3 – APPROVAL TO PROCEED

If approval in principle is given for the project by PTR, staff will work with the organization to prepare a Council report requesting approval for the project. Generally, the information presented to PTR would be sufficient for the Council report unless otherwise specified by PTR or staff.

If Council approves the project, the organization may then initiate the public engagement process, a

fundraising campaign and develop more detailed project plans.

Before the project proceeds, the community organization must present to department staff:

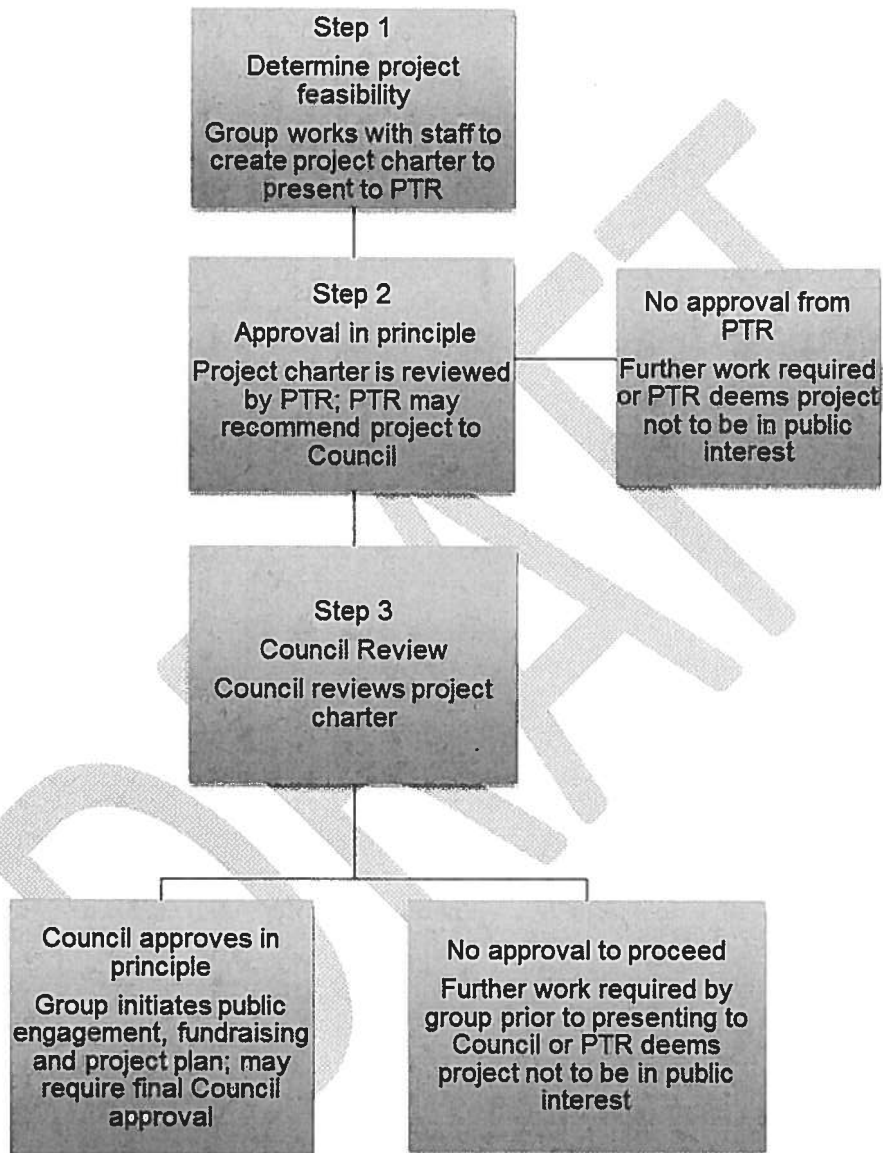
1. Results of public engagement
2. Construction drawings and specifications.
3. A detailed site plan.
4. A project budget including written quotes for all work.
5. A construction plan and schedule.
6. An operating plan and budget.
7. A verification of financing from all sources.
8. A change management plan.

Based on these items, a partnership agreement stating the intentions of each party, shared project objectives and outcomes will be developed and signed off prior to project start up.

All capital projects built on District property become the property of the District

**Result of Step 3:** Detailed project plans as outlined above, public engagement results and partnership agreement.

## Community Driven Capital Projects Process



## Spectrum of Public Participation (P2) at Saanich Parks

Saanich Parks uses the following spectrum of Public Participation. The level of participation is determined on a case by case basis. Typical projects and their typical level of participation are listed below.

Overall level of P2:	Inform	Consult	Involve	Collaborate
<b>Example of project</b> <ul style="list-style-type: none"> <li>▪ <i>Typical P2 process and basic steps / techniques</i></li> <li>▪ <i>Typical time to complete P2 process</i></li> </ul>	<b>Replace or maintain existing infrastructure – no design change</b> (eg stairs, fencing, re-surface parking lot or trails) <ul style="list-style-type: none"> <li>▪ <i>Process: notification (posting or letter with contact information, or phone call)</i></li> <li>▪ <i>Time: 1 – 3 weeks before construction</i></li> </ul> <b>Invasive species management</b> <ul style="list-style-type: none"> <li>▪ <i>Process: posting of treatment to be used for specific plant with explanation and contact info</i></li> <li>▪ <i>Time: 2 weeks prior to treatment</i></li> </ul> <b>Urban forest maintenance (e.g. pruning and tree removals on public land)</b> <ul style="list-style-type: none"> <li>▪ <i>Process: posting on tree(s) of works to be done with contact info</i></li> <li>▪ <i>Time: 2 weeks prior to work</i></li> </ul>	<b>New major park component, eg playground, sports field, trails</b> <ul style="list-style-type: none"> <li>▪ <i>Process: key stakeholder engagement, public open house(s) / workshop(s), surveys. May require final approvals from advisory committees and Council.</i></li> <li>▪ <i>Time: 6 – 18 mo</i></li> </ul> <b>New park design / park re-design</b> <ul style="list-style-type: none"> <li>▪ <i>Process: key stakeholder engagement, public open house(s) / workshop(s), surveys. Final approvals from advisory committees and Council.</i></li> <li>▪ <i>Time: 6 – 18 mo</i></li> </ul> <b>Park management plans</b> <ul style="list-style-type: none"> <li>▪ <i>Process: engage key stakeholders and/or form Advisory Group, public open houses / workshops, surveys. Final approvals from advisory committees and Council.</i></li> <li>▪ <i>Time: 18 -30 mo</i></li> </ul> <b>Mass tree removals and replacements</b> <ul style="list-style-type: none"> <li>▪ <i>Process: meet with affected home owners to discuss, and choose replacement trees</i></li> <li>▪ <i>Time: 2 – 4 weeks</i></li> </ul>	<b>Community partnership projects</b> (eg community gardens) <ul style="list-style-type: none"> <li>▪ <i>Process: key stakeholder engagement, direct involvement with project – initiators, public open house(s) / workshop(s), surveys. May require final approvals from advisory committees and Council.</i></li> <li>▪ <i>Time: 9 – 24 months</i></li> </ul> <b>Natural areas restoration projects</b> <ul style="list-style-type: none"> <li>▪ <i>Process: work directly with volunteers to remove invasive plants and/or implement restoration plan</i></li> <li>▪ <i>Time: ongoing</i></li> </ul>	<b>Boulevard tree partnership program</b> <ul style="list-style-type: none"> <li>▪ <i>Process: meet with homeowner and choose tree to be planted</i></li> <li>▪ <i>Time: 1 – 2 weeks</i></li> </ul>

**Note:** Projects are shown at their *overall* level of engagement. Most projects will have a P2 plan consisting of several public engagement events. Individual events may fall above or below the project's overall level. For example, a park management plan project with an overall level of Consult may include a background information session at the Inform level, and an event to name trails at the Collaborate level.

The length of time a project takes is highly variable depending on the complexity of the project, the number of people affected, their sense of ownership, the degree of change, the level of controversy, and the degree of political support.



# Summer Camp Report

*Submitted by: Chris Filler, Programmer II (Youth Services) and Adam Richards, Programmer II (SCP)*

## To: Parks, Trails and Recreation Advisory Committee

September 22, 2016

We are just wrapping up another amazing summer of camps and programs offered to children and youth in our Saanich community. As you will note below, this summer like several before, continues to see exceptional participation in almost every category of camp programming. Our vision is to go beyond simply offering families a babysitting/daycare option, but rather we strive to offer our participants a chance to experience real adventure, growth, new opportunities, mentorship and age appropriate play. In order to achieve this we start by hiring the best staff, planning the best camps possible and working in conjunction with our amazing community partners.

### Statistics & Highlights

- 525+ summer camps and programs offered
- 7,000+ participants
- 75+ amazing summer staff
- 40+ Volunteers
- 20+ partnering organizations and services
- \$900,000 gross revenues

### New Initiatives in Summer 2016

- **Saanich Neighborhood Playground Program (SNPP) Adventures**  
This year marked the successful debut of "SNPP Adventures". The program was geared towards 11 to 14 year olds and was especially popular for parents with children who have "aged out" of our regular SNPP program and were looking for something a little more adventurous.
- **Urban Wilderness Camp, Wilderness Leadership, Mission Impossible Camp**
- **Ice Camp (skating)**
- **Mermaid Camp...** Yes mermaid camp! 7-9yr olds having the chance to wear mermaid tails and learn to swim like a mermaid. A spectator favourite.
- **New Teen Art Workshops** - Urban Art Revolution, Pottery for Teens, Open Studio

- **Shift in Philosophy** - "Let them Play"

With the recent adoption of the Youth Development Strategy in 2015, we took a general shift towards unstructured play and curiosity-driven learning in many of our camps and summer programs. Although all camps kept a basic schedule, many camps shifted their functioning to a more choice-based structure of programming: "Right now you can either work on your fort or do some crafting" as opposed to "Everyone do \_\_\_\_ now." With the "Let them Play" mantra, there was a greater emphasis on connecting the campers to the natural world around them. We actively pushed our staff to increase the campers' exposure to "the wilds" of the parks, encouraged them to not flee from rain showers, and provided them with additional resources to help them learn about our local natural history. The efforts shown by staff to reconnect kids with nature was met with overwhelming approval by parents, and the kids had some fun along the way too! We will definitely be building on this in the coming summers.

- **Staffing**

Staff were a stellar crew this year. Our youth leaders were fantastic mentors to their peers and campers. Our program assistants and on-call staff were crucial in the adaptability to meet the continually fluctuating needs of the camps.

Although some of our staff this year are moving on to higher education to be lawyers and doctors and plan to seek employment in their field next summer, the overwhelming majority of staff are keen to return in 2017. The growth witnessed in some of our staff this year was inspiring. We are genuinely excited for their return to Saanich next year with increased experience and richer responsibility.

- **Leadership**

Once again this summer saw an amazing example of inspiring young leaders in training go through our summer leadership continuum (Teens in Action Lvl I 12-14yrs; Lvl II 15/16yrs, Internship 16-18yrs). Due to popularity, we added a second TiA Lvl I course for a total of 55 youth in both levels, along with another successful contingent of 20 summer interns. Interns were selected after an application/interview process and received valuable leadership training before being placed in a Saanich camp for one month of on the job experience.

- **Training**

Staff training was divided into a policies and an experiential component. In the policies training, staff were oriented to Saanich policies, the procedures of our daycamps, and experienced the new Child Protection Policy Video. During experiential training, we focused on equipping staff to set children up for successful sessions of unstructured play, cultivating childhood curiosity driven learning, and fostering mentorship between staff and campers alike

- Preparing staff to be better prepared to lead children with exceptional or challenging needs. Tools for campers on the Autism spectrum was the focus during our "All Staff training" day, where a representative from Recreation Integration Victoria (RIV) delivered a workshop. It was a great follow up to our previous summer's training with Dr. Allison Rees.

Item 6



## Partnerships

This year we worked with several organizations to either acquire greater support for the campers in need, create a deeper sense of community, or provide opportunities to campers that they would normally not have had the chance to experience.

A few notable examples:

- **Canucks Autism Network:** C.A.N came to our staff training and provided tools and techniques for successful program delivery for campers on the autism spectrum; this was well received by staff.
- **Recreation Integration Victoria:** Providing training and in-program support to campers; this is a highly valued service by both families and staff.
- **Victoria Canoe & Kayak Club:** With our new "Adventures" program, many exciting activities were planned.
- **Boys and Girls Club of Greater Victoria:** Coordinated our very full and exciting Outdoor Adventure Camps
- Other contractors offering camps in partnership with Saanich Recreation include:
  - Eli Pasquale** - Basketball
  - Nolan Riding** - Bike Camps
  - Horticulture Centre of the Pacific** - Gardener Camps
  - West Side Stables** - Horse Riding Camps
  - Falcon Gymnastics** - Gymnastics
  - Soccertron, Sportball, World Cup Soccer** - Sports Camps
  - Victoria Bowmen Society** - Archery Camps

## Challenges

One challenge we encountered this summer was the number of campers with exceptional or challenging needs. Some of our staff experienced challenging situations and deftly navigated sensitive issues of inappropriate behavior, violence, and child protection. Through staff perseverance and support from community groups such as RIV, campers often received the help they needed. We will continue to work to equip our staff with the tools needed to deal with such circumstances, as we only see this need growing in future summers.

## Summary

- Another amazing summer!
- "Let them Play" was well received by everyone involved; programmers, leaders, campers and parents.
- Staff mentored each other, and were instrumental in the professional development of their peers.
- A focus on outdoors and connectedness to nature
- New partnerships were created and we look forward to continuing those relationships in the future.

Item 6





## Saanich looks to the future, acquires new parkland

September 7, 2016

**Saanich, BC** – The District of Saanich's contingent of parks grows a little bigger today with the acquisition of 1.5 hectares of undeveloped private land at 310 Ivor Road in west Saanich.

The property - along with four adjacent undeveloped Saanich lots and rights of ways - will create a natural park of about 2.8 hectares, bringing the total number of parks in Saanich to 171.

"Saanich is always looking at ways to improve our already impressive system of parks and natural areas for current and future generations to enjoy," said Susan Brice, councillor and chair of the Parks, Trails and Recreation Committee. "This land is in a wonderful natural state, with very few invasive species and an abundance of wildlife such as owls, amphibians and small mammals."

Highlights of the new parkland include:

- The parkland features a mature fir forest and rocky Garry oak outcrops, along with a seasonal stream.
- With Goy, Logan and Calvert Parks located nearby, the park will act as a stepping stone or refuge for wildlife in the area, providing connectivity between Francis King Regional Park to Layritz and Quicksbottom Parks.
- The park will form part of future trail connections leading to Camosun College and Vancouver Island Technology Park.

This new addition brings Saanich one step closer to fulfilling its vision of expanding parkland in both rural and urban areas. The park will officially be known as *Kardum Park* – after the family who previously owned the land.

### Quick Facts:

- Saanich has over 170 parks, covering more than 820 hectares.
- Saanich parkland represents 8 per cent of the total area of Saanich, or about 100 football fields.
- Saanich parks offer more than 100 kilometres of trails – from short, leisurely strolls to intense uphill climbs

### Learn More:

To learn more about Saanich's parks and natural areas, please visit: [Saanich.ca](http://www.saanich.ca).

Hen7

## THE CORPORATION OF THE DISTRICT OF SAANICH

**REPORT TO:** Parks, Trails & Recreation Committee

**DATE:** September 29, 2016

**FROM:** Eva Riccius, Senior Manager, Parks

**SUBJECT:** Parks Division Update – September, 2016

---

The following update is provided for the Parks, Trails & Recreation Committee:

**Maintenance – EI-2** – Soccer fields have reopened for the fall season and are in excellent condition following the summer maintenance closure. There is also fall baseball and football going on at many of our parks. Maintenance crews have tackled a drainage and irrigation project at Layritz Diamond #2 this summer. Cadboro-Gyro Park was re-seeded earlier this month, which will help the park look at its best for next year. Mowing and tilling at Panama Flats is underway to help prevent a repeat of potential odour issues from decomposing vegetation. Other programs include washroom maintenance, rough & roadside mowing, camper cleanups, parks refuse, and parking lots.

**Construction – EI-3-3** – Tolmie Park has been the main focus for the summer (described below). Also, the tennis courts at Prospect Lake court were rebuilt, and pickleball lines have been added. Hyacinth Park tennis courts were repainted. Bridge re-decking was completed at Swan Creek and Shadywood Parks. Other programs include our playground inspections (56 locations), painting, building repairs, and furniture maintenance.

**Horticulture – EI-2** – The past three months have seen staff busy maintaining seasonal display beds, turf and responding to calls for service for neighbourhood traffic islands. Annual plants are beginning to fade and staff will be starting to remove them soon in preparation for planting bulbs in the fall. Renovations of traffic islands will begin in late September and continue through November. We expect to complete 16 to 20 islands this year.

**Urban Forestry – EI-1-3** – This has been another busy summer for the Urban Forestry section. With nearly 1000 Calls for Service since the start of the year, the Urban Forestry section has work pre-scheduled for the next month. The park pruning program continues as we take advantage of the dry weather to get access into some of our higher use parks. Our stump grinding program has finally begun to catch up with less than 100 stumps outstanding.

**Natural Areas – EI-1-5** – Natural Areas staff are winding down the tree watering program for over 1200 boulevard and park trees. Small tree maintenance will soon change focus to such tasks as fertilizing and mulching to ensure healthy root establishment during the winter dormant months.

The 2016 tree planting program is currently being organized and will begin in late October when the consistent rains begin. Staff will plant several hundred new park and street trees throughout Saanich.

Invasive species removal teams have concentrated on holly and hawthorn trees during the summer months to the limit the amount of ground disturbance that occurs in the dry soil.

2016 saw another successful partnership between Fisheries and Oceans Canada, the Friends of Mount Douglas Park Society, the Pacific Salmon Foundation, Saanich Parks and Saanich Storm and Wastewater for improving the slope stability and salmon habitat within Douglas Creek. This year's work area was located at the Edgemont Road entrance to Mount Douglas Park and included the enhancement of approximately 150m section of the creek. Residents impacted by the work were informed of the project and consulted about future restoration of the area. Replanting of the work areas will take place later in the fall with volunteers and staff.

The Pulling Together Volunteers are regrouping after the summer hiatus and will be working closely with staff to remove invasive species in approximately 20 parks and create planting plans for the fall planting season.

## **Projects and Planning and Design**

**Wilkinson Lindsay Bridge/Pathway Project** – Trail construction is 75% complete. Originally planned for a late September completion, some delays with materials and complexities with the pile system have pushed back the completion date several weeks.

**McKenzie Interchange** – On May 9th the Minister announced the partial cloverleaf option (#2) had been selected as the preferred design based on the feedback received from the public. Since that time there has been a significant amount of public, political and media interest. Staff from Engineering and Parks are continuing to meet with Ministry of Transportation and Infrastructure (MoTI) staff on a regular basis. Impacts to Cuthbert Holmes Park are being assessed and mitigation details are being discussed with MoTI staff. The next step of the process involves detailed design and staff will be working closely with the Ministry to promote Saanich interests as per Council's direction.

**Tolmie Park Improvements** – Construction began in late June and has been steady throughout the summer. Staff will be continuing to work on the park throughout



September and into October.

Final improvements to the park still to be completed include:

- installation of site furniture, playground equipment, sports equipment (nets, posts, hoops etc.), signs, and fences around the courts
- placing of woodchips and sand at the playgrounds
- painting of lines on the sports court
- stamping portions of the asphalt
- brushing out of trees between the courts
- planting of trees
- installing split rail fence between playground and open field

**Mount Douglas Access Study** – Staff and Urban Systems have completed the online survey and the data collection and are working with the Project Advisory Team to make recommendations that will be presented to the public in October.

**Park Management Plans – Haro Woods** – A public participation plan was endorsed by the Advisory Group at their 3<sup>rd</sup> meeting on August 30. The 1<sup>st</sup> of 3 public events will be held on Saturday, October 1 at Goward House. Its purpose is to offer residents an opportunity to tour the forest and help in establishing a guiding vision for Haro Woods. Later events will focus on specific goals and actions regarding natural areas management and recreation that will help to realize the vision.

**Rutledge Park Splash Pad and Washroom Building** – Staff, together with the Quadra Cedar Hill CA hosted a public engagement event on May 25<sup>th</sup> where over 50 people attended. Feedback from that event is still being collected via an online survey. Staff made a Canada 150 Infrastructure Grant application for this project. We are waiting to hear if the project is funded.

**574 Walter Avenue** – Staff are moving forward with establishment of this new park. Donated to Saanich as a natural park. The house and garage were demolished on August 20, 2016. Some architectural features from the home were carefully removed and left on the boulevard for the public to salvage. A public participation opportunity has been scheduled and local residents have been invited to attend a site meeting on Wednesday September 28, 2016. Two sessions are available for drop-in; a morning session between 10:00am to 11:00am, and an afternoon session between 4:30pm to 6:00pm. The public is welcome to come and provide feedback to staff on the future of this new parkland.

## THE COROPORATION OF THE DISTRICT OF SAANICH

**TO:** PARKS, TRAILS AND RECREATION ADVISORY COMMITTEE

**FROM:** KELLI-ANN ARMSTRONG, SENIOR MANAGER – RECREATION SERVICES

**SUBJECT:** RECREATION DIVISION HIGHLIGHTS

**DATE:** September 22, 2016

---

### **Gordon Head Recreation Centre**

"Extreme Caution" the team from Gordon Head placed second at the Provincial Lifeguarding Championship in August. The success is a testament to the strong leadership provided by our seasoned guarding staff and hours of practice doing water rescues, first aid simulations and fitness training.

A busy summer at Gordon Head with the installation of the new boilers and heat recovery system. In addition the west side of the building has undergone an envelope remediation. The work is scheduled to complete late November or early December.

During the last 3 weeks of summer, GH offered free public swims for children on Tuesdays and Thursdays. Moderate success with some increased sessions hosting an increase of 100 or more swimmers. This summer the most popular aquatics programs were Junior Lifeguard Camps and Swim Lessons.

Summer camps saw 1,455 registrations in school age and another 290 in preschool programs. Camp registration was very strong with an 87% fill rate and a 4% cancelation rate. A very busy summer with the break being 10 weeks this year.

GH also hosted a pool rental by the Transgender community. We had 30 people in attendance, but it was a great opportunity to work with this group in preparation for more swims in 2017.

We anticipate a busy fall as registrations have already been unusually busy.

### **Community Services**

#### **Youth Leadership**

Every summer, the desire for meaningful youth leadership opportunities with the District of Saanich grows and this summer was no exception. These programs are often the first step young people experience to build leadership skills and return as future volunteers or better yet, as staff members.

- Three Teens In Action programs were offered, two for Level 1 with 41 youth attending and 13 youth participating in Level 2.

- Nineteen successful Youth Interns were chosen to complete one month placements with the Saanich Neighbourhood Parks Program, and summer camp programs at the Recreation Centres. Interns are between the ages of 16-18 and participate in work experience based training throughout the program, culminating in the organization of an end of summer carnival for over 200 children. Training topics cover safety and emergency protocols, organizing and leading games and activities, and working effectively with groups of children, with a variety of backgrounds and abilities.

### **Summer Neighbourhood Playground Program (SNPP)**

SNPP hosted 1482 full week participants, in addition to the few hundred drop-ins. It is the most affordable program in the region, and the drop-in function and outdoor play component makes it highly attractive to parents and grandparents. Children learn a wide variety of play and social skills in the programs and our staff are what make this program so successful – from Program Leaders to Supervisors to Programmers, this is a socially worthwhile and active for life program assisting the health and wellbeing of so many school-aged children. This year the program expanded by offering an 8<sup>th</sup> program at Copley Park for 11-14 years olds called Copley Adventures with a focus on outdoor education with great success.

### **50th Anniversary of Saanich Strawberry Festival**

The 50th annual Saanich Strawberry Festival took place on Sunday, July 10<sup>th</sup>. Over the past 50 years the theme of a "family picnic at the beach" has been maintained and adds to the tradition that makes this event unique, showcasing the beautiful setting in which it is held. The event has grown considerably over the past decade and now features two distinct areas:

- the traditional upper level that caters to a relaxed atmosphere and older crowd and,
- the ever growing Kids Zone that is in the lower level of Beaver Lake Park.

#### *In recognition of the 50th anniversary:*

1. For the first time, a second stage was set up in the lower level that featured a wide range of cultural performances, bringing out several families that may not have participated in past years.
2. To enhance the display on the upper level, local artist Fred Dobbs was hired to create a giant commemorative 50th anniversary sand sculpture next to the beach area. Fred used the 50th Strawberry Festival branding to compliment his giant bowl of strawberries and ice cream - a favourite part of the event for many families for many years.
3. Prior to the festival, a 4 page article in the Saanich News helped showcase some of the history of the event and was a great way to highlight some of the volunteers that have helped put this event together.

### **Music in the Park 2016**

2016 was the 10th anniversary of Music in the Park. With continued support from Saanich Legacy Foundation eight concerts series with six community associations and Goward House were hosted. Most of the locations saw an increase in attendance, although the weather was not as sunny as in previous years. This series is organized in partnership with the many community associations, whom are very committed to these neighbourhood events and were excellent to work with.

### **Cadboro Bay Festival Update**

The gray and unsettled skies did not the approximate 4000 people from participating in the Cadboro Bay Festival at Gyro Park on Sunday, August 7th. Extensive radio, newsprint and social media coverage of the event proved to be successful in drawing residents down to the park. Gyro Park is one of the best locations in the CRD to enjoy a day the beach and what a better way to celebrate summer than to see the giant sand sculptures come to life. The new playground upgrades and picnic facilities were well used throughout the day and they added to the great atmosphere this venue provides.

Professional sand sculptors began working on their creations on Friday morning and finished their work Sunday afternoon at the festival. Local artist Fred Dobbs and his crew of sculptors have traveled the world honing their craft and we are lucky to have such skilled artists live right here in Saanich. The theme chosen by event sponsors for this year's sand display was a pirate marine theme with a giant octopus that centered the display. A time lapse camera was installed prior to the festival to capture all the events that took place and it should make for a very interesting marketing video for next year's festival. A total of 27 community partners, vendors or food trucks participated in the one day festival

### **Cedar Hill Recreation Centre**

In August, Cedar Hill and Oak Bay Recreation Centres partnered to offer a Tennis Camp Jamboree to camp participants and coaches from both Centres. Courtside Sports provided prizes and giveaways and 40 kids aged 6 – 16 participated.

NEW this Fall – The Gallery Café is pleased to introduce grilled Panini sandwiches, Monday through Friday. Be sure to stop by for a light meal and try the daily Panini special.

Summer was bustling at the arts centre. Our summer offerings for teens were very popular. Two sessions of Art Exploration – Open Studio, two sessions of Urban Art Revolution – Word Art Workshop, Wonderful Watercolour for teens, and the ever popular Teen Pottery Intensive had great registration. Many of our teen programs had wait lists and staff kept hearing from parents that they are hoping more teen programs will be offered in the region in the future. The Arts Centre is looking forward to having many of these artsy teens back this fall for the weekly Art Hive drop-in and the new program, Anime Drawing.

### **Saanich Commonwealth Place**

On the dry side, summer camps were packed for all ages with activities ranging from art and cooking to archery. SCP also partnered with the Boys & Girls Club to offer Wilderness Camps, for the first time this summer. New pre-school age offerings were also well received with a once a week Parent and Tot class and a Nature Camp that was full for all 5 weeks it was offered. A try out program, **Family** Outstanding Outing Day was offered as a 'Day at the Range' with archery in the morning, lunch at My Chosen Café, and the afternoon at a driving range. It was a great success with all families eager to participate again.

On the Aquatic side, summer was busy as usual with a number of large meets, including the SWIM BC AAA Championships and the Oak Bay ORCA Swim meet. SCP also hosted the Barnsley Provincial Lifeguard Competition. Eleven teams competed and 33 volunteers helped in a number of ways. New this summer was a 'Mermaid' Camp, where participants could swim in the pool with mermaid tails. One of the major aquatic highlights of the summer was the 2016 Summer Olympic Games. The pro-shop and community corner were decorated to celebrate Canadian athletes, particularly those who train out of SCP: Ryan Cochrane, Hilary Caldwell and Stephanie Horner. Also during the 2016 Paralympics, Stefan Daniel won silver in the para-triathlon (a first time Paralympic event), a testament to the value of legacy facilities.

### **G.R. Pearkes Recreation Centre**

This summer Pearkes skate staff ran our first "learn to skate" week long day camps in a number of years. There was very good response to this camp with near full registration for the weeks it was offered. A great idea by staff and a good way for many families to continue their skate education and stay cool from the summer sun!

Pearkes also ran several "Tough Kidder" Camps modelled after the "Tough Mudder" style races, where kids aged 8-12 years got to "train" for this kind of race by playing strategy games and completing other outdoors tasks in nearby Cuthbert Holmes Park, as well as completing a number of "challenge" tasks in and around the building during the week. This was a very active camp that got youth into the outdoors participating in challenging activities in nature.

Over the summer Pearkes Maintenance staff completed the installation of 280 theatre seats recycled from the IMAX Theatre at the BC Museum. Staff did a great job fitting the pieces together to make the seats work in this space. These seats are very well cushioned and should help with the "cold" atmosphere and feeling in the arena.

Item 9

Pearkes also had some roof repairs done around the near 50 year old Gold arena and the Fieldhouse. Crews were busy on these roofs through July and much of August. The job was completed by August 19<sup>th</sup>.

Events hosted recently by Pearkes include the Gem and Mineral Show August 19-21<sup>st</sup>, the Bridal Fair on September 18<sup>th</sup> and the Baby Fair September 24, 25<sup>th</sup>. Upcoming events:

- Victoria Ultimate Toy and Hobby Show – October 2
- Kids Mega Sale – October 8
- Victoria Fall Home Expo – October 14-16
- Victoria Teen Fest – November 5

Report Submitted By:



Kelli-Ann Armstrong, Senior Manager, Recreation Services

Item 9



>>> [REDACTED] ;" [REDACTED] w.ca> 6/23/2016 9:09 PM >>>

FYI... these are some of the ideas that were discussed at the MoTI tour last week with the conservation groups and CRD...

there were many concerns raised about the retention pond, filtering stormwater runoff etc.... and how are they going to filter stormwater runoff during construction and storage of fill on the site etc. There did not appear to be answers for that.... hum, have those issues been given consideration by MoTI??

**Subject:** Stormwater Detox: How natural infrastructure can help save salmon - video presentation

Hello GWI Committee,

The link below is for a 34 minute video of a presentation by a researcher at Washington State University who looked at the effects of stormwater runoff on salmon and how raingardens remove the toxicity from runoff.

I would encourage you to take the time to have a look – there is some really interesting and fairly definitive research on the impacts of highway runoff on salmon and how effective rain gardens are in removing the toxicity in the runoff.

For those of you on the Interchange tour on Monday – this is the research that I was referring to. And yes I have already shared this information with MOT staff. ☺

Have a great weekend.

Cheers, Jody

---

**CLICK TO WATCH YOUTUBE VIDEO:** <https://www.youtube.com/watch?v=BNruLbD2sP8>

*Dr. Jenifer McIntyre, aquatic ecotoxicologist, explains the science at a WSU Innovators Lecture titled: "Stormwater detox: How natural infrastructure can help save salmon" (April 2016).*

*The presentation is detailed in providing an understanding of why rain gardens eliminate toxicity.*

This message is intended only for the use of the individual or entity named above, and may contain information that is privileged, confidential or exempt from disclosure under applicable law. If you are not the intended recipient or their employee or agent responsible for receiving the message on their behalf your receipt of this message is in error and not meant to waive privilege in this message. Please notify us immediately, and delete the message and any attachments without reading the attachments. Any dissemination, distribution or copying of this communication by anyone other than the intended recipient is strictly prohibited. Thank you. Please consider the environment before printing this email.

Item 10