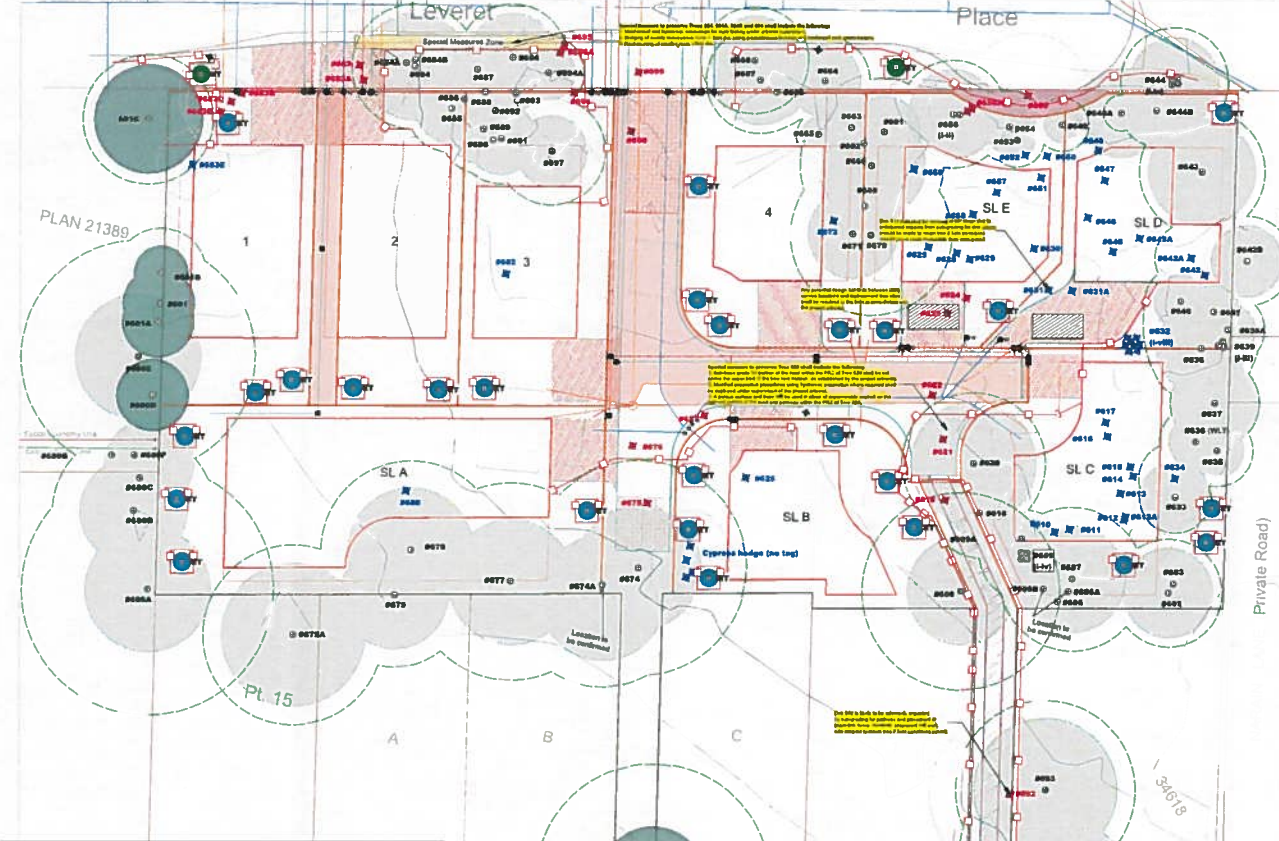


**TREE INVENTORY TABLE**

CAA Tree ID	Common Name	DBH (in)	Height (ft)	Health	Special Measure Zone	Tree Location Class	Recommendations
147	Shary oak	40	2	5	Good	Marginal Tree	Remove and protect
148	Shary oak	42	7	7	Good	Marginal Tree	Remove and protect
149	Shary oak	42	7	7	Good	Marginal Tree	Remove and protect
150	Shary oak	42	7	7	Good	Marginal Tree	Remove and protect
151	Shary oak	42	7	7	Good	Marginal Tree	Remove and protect
152	Shary oak	42	7	7	Good	Marginal Tree	Remove and protect
153	Shary oak	42	7	7	Good	Marginal Tree	Remove and protect
154	Shary oak	42	7	7	Good	Marginal Tree	Remove and protect
155	Shary oak	42	7	7	Good	Marginal Tree	Remove and protect
156	Shary oak	42	7	7	Good	Marginal Tree	Remove and protect
157	Shary oak	42	7	7	Good	Marginal Tree	Remove and protect
158	Shary oak	42	7	7	Good	Marginal Tree	Remove and protect
159	Shary oak	42	7	7	Good	Marginal Tree	Remove and protect
160	Shary oak	42	7	7	Good	Marginal Tree	Remove and protect
161	Shary oak	42	7	7	Good	Marginal Tree	Remove and protect
162	Shary oak	42	7	7	Good	Marginal Tree	Remove and protect
163	Shary oak	42	7	7	Good	Marginal Tree	Remove and protect
164	Shary oak	42	7	7	Good	Marginal Tree	Remove and protect
165	Shary oak	42	7	7	Good	Marginal Tree	Remove and protect
166	Shary oak	42	7	7	Good	Marginal Tree	Remove and protect
167	Shary oak	42	7	7	Good	Marginal Tree	Remove and protect
168	Shary oak	42	7	7	Good	Marginal Tree	Remove and protect
169	Shary oak	42	7	7	Good	Marginal Tree	Remove and protect
170	Shary oak	42	7	7	Good	Marginal Tree	Remove and protect
171	Shary oak	42	7	7	Good	Marginal Tree	Remove and protect
172	Shary oak	42	7	7	Good	Marginal Tree	Remove and protect
173	Shary oak	42	7	7	Good	Marginal Tree	Remove and protect
174	Shary oak	42	7	7	Good	Marginal Tree	Remove and protect
175	Shary oak	42	7	7	Good	Marginal Tree	Remove and protect
176	Shary oak	42	7	7	Good	Marginal Tree	Remove and protect
177	Shary oak	42	7	7	Good	Marginal Tree	Remove and protect
178	Shary oak	42	7	7	Good	Marginal Tree	Remove and protect
179	Shary oak	42	7	7	Good	Marginal Tree	Remove and protect
180	Shary oak	42	7	7	Good	Marginal Tree	Remove and protect
181	Shary oak	42	7	7	Good	Marginal Tree	Remove and protect
182	Shary oak	42	7	7	Good	Marginal Tree	Remove and protect
183	Shary oak	42	7	7	Good	Marginal Tree	Remove and protect
184	Shary oak	42	7	7	Good	Marginal Tree	Remove and protect
185	Shary oak	42	7	7	Good	Marginal Tree	Remove and protect
186	Shary oak	42	7	7	Good	Marginal Tree	Remove and protect
187	Shary oak	42	7	7	Good	Marginal Tree	Remove and protect
188	Shary oak	42	7	7	Good	Marginal Tree	Remove and protect
189	Shary oak	42	7	7	Good	Marginal Tree	Remove and protect
190	Shary oak	42	7	7	Good	Marginal Tree	Remove and protect
191	Shary oak	42	7	7	Good	Marginal Tree	Remove and protect
192	Shary oak	42	7	7	Good	Marginal Tree	Remove and protect
193	Shary oak	42	7	7	Good	Marginal Tree	Remove and protect
194	Shary oak	42	7	7	Good	Marginal Tree	Remove and protect
195	Shary oak	42	7	7	Good	Marginal Tree	Remove and protect
196	Shary oak	42	7	7	Good	Marginal Tree	Remove and protect
197	Shary oak	42	7	7	Good	Marginal Tree	Remove and protect
198	Shary oak	42	7	7	Good	Marginal Tree	Remove and protect
199	Shary oak	42	7	7	Good	Marginal Tree	Remove and protect
200	Shary oak	42	7	7	Good	Marginal Tree	Remove and protect



**TREE PRESERVATION MEASURES**

- Before any trenching or road works begin, the tree engineer and contractor shall meet with the applicant to review the Tree Protection Plan.
- A detailed on-site survey of the tree inventory shall be conducted to verify the tree locations and sizes. The tree engineer shall ensure that all relevant sub-trees are surveyed.
- The Project Architect shall issue all trees indicated for removal and meet with the tree contractor prior to felling. The tree contractor shall have demonstrated compliance in accordance with tree removal procedures.
- Tree felling shall be avoided after falling and clearing, but before other site preparation or construction.
- Tree felling shall remain in good condition throughout the duration of the project.
- Tree felling shall remain in place until the removal of the barrier is approved by Sciences Park.
- Tree removal shall be avoided to preserve storm retention, sedimentation, service drainage, site grading and existing water, as adjacent to the tree protection areas (TPAs).
- Procedures for rock removal near tree root shall be followed.
- The general contractor shall remove a trenching and/or existing service drainage, site grading and existing water, as adjacent to the tree protection areas (TPAs).
- Where concrete is necessary by the general contractor, it shall be placed in a trenching and/or existing service drainage, site grading and existing water, as adjacent to the tree protection areas (TPAs).
- Any tree roots damaged shall be pruned back to undamaged tissue by the arborist.
- The vertical face of the excavation adjacent to the TPA shall be covered with geotextile to prevent soil erosion and trees.
- In areas where the root zone of the tree has been indicated by excavation, the surrounding area shall be top-dressed with 18cm of top soil.
- Disturbed areas shall be revegetated within the 60-day window period to a minimum surface depth of 10cm as directed by the arborist. If revegetation is not possible, the site shall be revegetated with a certified plant health care specialist with a biological equivalent such as *Betula pumila* (European Larch).
- Temporary construction access within a TPA shall be approved and supervised by the project architect.
- If a trench is necessary to reduce the tree felling, the exposed TPA outside the trench shall be protected with a 2.5m x 2.5m safety gate to site covering or road works surrounding.
- The equipment, materials or excavated soil shall be stored or placed within the TPA.
- 20 replacement trees will be planted to District standards and cost-share provided for an additional 70 trees. Replacement trees planting sites shall be fencing with a 2.5m x 2.5m safety gate to site covering or road works surrounding.
- A list for tree Schedule-1 boundary trees shall be provided to the District of Sciences Park. Boundary trees shall be fencing with a 2.5m x 2.5m safety gate to site covering or road works surrounding.

**TREE INVENTORY TABLE (Cont.)**

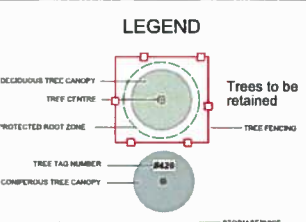
CAA Tree ID	Common Name	DBH (in)	Height (ft)	Health	Special Measure Zone	Tree Location Class	Recommendations
191	Shary oak	42	7	7	Good	Marginal Tree	Remove and protect
192	Shary oak	42	7	7	Good	Marginal Tree	Remove and protect
193	Shary oak	42	7	7	Good	Marginal Tree	Remove and protect
194	Shary oak	42	7	7	Good	Marginal Tree	Remove and protect
195	Shary oak	42	7	7	Good	Marginal Tree	Remove and protect
196	Shary oak	42	7	7	Good	Marginal Tree	Remove and protect
197	Shary oak	42	7	7	Good	Marginal Tree	Remove and protect
198	Shary oak	42	7	7	Good	Marginal Tree	Remove and protect
199	Shary oak	42	7	7	Good	Marginal Tree	Remove and protect
200	Shary oak	42	7	7	Good	Marginal Tree	Remove and protect
201	Shary oak	42	7	7	Good	Marginal Tree	Remove and protect
202	Shary oak	42	7	7	Good	Marginal Tree	Remove and protect
203	Shary oak	42	7	7	Good	Marginal Tree	Remove and protect
204	Shary oak	42	7	7	Good	Marginal Tree	Remove and protect
205	Shary oak	42	7	7	Good	Marginal Tree	Remove and protect
206	Shary oak	42	7	7	Good	Marginal Tree	Remove and protect
207	Shary oak	42	7	7	Good	Marginal Tree	Remove and protect
208	Shary oak	42	7	7	Good	Marginal Tree	Remove and protect
209	Shary oak	42	7	7	Good	Marginal Tree	Remove and protect
210	Shary oak	42	7	7	Good	Marginal Tree	Remove and protect
211	Shary oak	42	7	7	Good	Marginal Tree	Remove and protect
212	Shary oak	42	7	7	Good	Marginal Tree	Remove and protect
213	Shary oak	42	7	7	Good	Marginal Tree	Remove and protect
214	Shary oak	42	7	7	Good	Marginal Tree	Remove and protect
215	Shary oak	42	7	7	Good	Marginal Tree	Remove and protect
216	Shary oak	42	7	7	Good	Marginal Tree	Remove and protect
217	Shary oak	42	7	7	Good	Marginal Tree	Remove and protect
218	Shary oak	42	7	7	Good	Marginal Tree	Remove and protect
219	Shary oak	42	7	7	Good	Marginal Tree	Remove and protect
220	Shary oak	42	7	7	Good	Marginal Tree	Remove and protect

**All-Weather Tree Fencing Signage (18x24")**

**DO NOT ENTER**  
Tree Protection Zone

**SUMMARY TREE STATISTICS**

CATEGORY	# OF TREES	TREE REMOVALS		
		Site Servicing & Road Works	Building Permit	Poor Condition
Total number of trees indicated on Tree Plan	106	12	41	2
On-site Bylaw-protected Trees	106	12	41	2
Off-site Municipal property	21	5	1	0
Adjacent Private Off-site Trees	16	1	0	0
Boundary Trees	3	0	0	0
Bylaw-protected tree removals	61	18	41	2



**PROJECT:** 872 - 8788 Miter Avenue, Saanich, BC

**SHEET TITLE:** Tree Management Plan Subdivision & Site Servicing

1	FOR MR APPROVAL	Aug 6, 2020
2	FOR MR APPROVAL	May 7, 2020
3	FOR MR APPROVAL	Mar 10, 2020

**PROJECT NO.:** 17-064  
**DATE:** August 5, 2020  
**SCALE:**  
**DRAWN BY:** JD  
**SHEET NO.:** T - 1

**RECEIVED**

**AUG 11 2020**

**PLANNING DEPT**