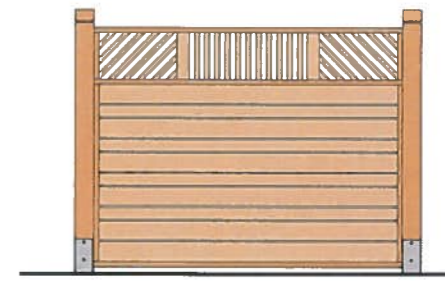


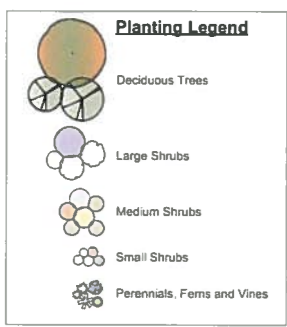
Recommended Nursery Stock

Trees	Botanical Name	Common Name	Size	
Total: 18	Acer macrophyllum	Big Leaf Maple	4cm cal	
	Ameiandier x grandiflora 'Autumn Brilliance'	Autumn Brilliance Serviceberry	4cm cal	
	Cercus canadensis	Eastern Redbud	6cm cal	
	Cornus 'Eddie's White Wonder'	Eddie's White Wonder Dogwood	4cm cal	
	Crateagus x lavallei	Lavalle hawthorn	6cm cal	
	Syrax japonicus	Japanese Snowbell	6cm cal	
Large Shrubs	Total: 71			
	Ceanothus thyrsiflorus 'Victoria'	Victoria Ceanothus (California Lilac)	#5 pot	
	Philadelphus 'Belle Etoile'	Belle Etoile Mock Orange	#10 pot	
	Taxus baccata 'Fastigiata'	Irish Yew	1.2m ht	
	Vaccinium ovatum	Evergreen Huckleberry	#5 pot	
Medium Shrubs	Total: 165			
	Azalea 'Snowbird'	Snowbird Azalea	#3 pot	
	Hydrangea macrophylla 'Lanarth White'	Lanarth White Hydrangea	#3 pot	
	Mahonia aquifolium	Tall Oregon Grape	#3 pot	
	Rhododendron 'Hino-crimson'	Evergreen Azalea	#3 pot	
	Rhododendron macrophyllum	Pacific Rhododendron	#3 pot	
	Rhododendron 'Rosa Mundi'	Rosa Mundi Rhododendron	#3 pot	
	Ribes sanguineum 'King Edward VII'	King Edward VII Flowering Currant	#3 pot	
	Symphoricarpos albus	Snowberry	#2 pot	
	Small Shrubs	Total: 358		
Cornus stolonifera 'Kelsey'		Kelsey Dogwood	#2 pot	
Gaultheria shallon		Salal	#1 pot	
Lavandula officinalis		English Lavender	#1 pot	
Mahonia repens		Creeping Oregon Grape	#1 pot	
Nandina domestica 'Fire Power'		Fire Power Heavenly Bamboo	#1 pot	
Sarcococca hookeriana var. humilis		Dwarf Sweet Box	#1 pot	
Perennials, Annuals and Ferns		Total: 249		
		Calamagrostis x acutiflora 'Karl Foerster'	Karl Foerster Feather Reed Grass	#1 pot
		Deschampsia caespitosa	Tufted Hair Grass	#1 pot
	Helictotrichon sempervirens	Blue Oat Grass	#1 pot	
	Polystichum munium	Sword Fern	#1 pot	
	Vines	Total: 8		
Clematis armandii	Evergreen Clematis	#3 pot		

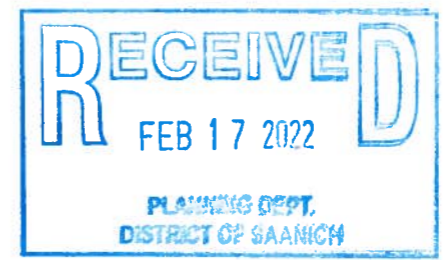
Notes:
 1. All work to be completed to current CSLA Landscape Standards
 2. All soft landscape to be irrigated with an automatic irrigation system



1. 1.8m high Perimeter Fence
Scale: 1:25



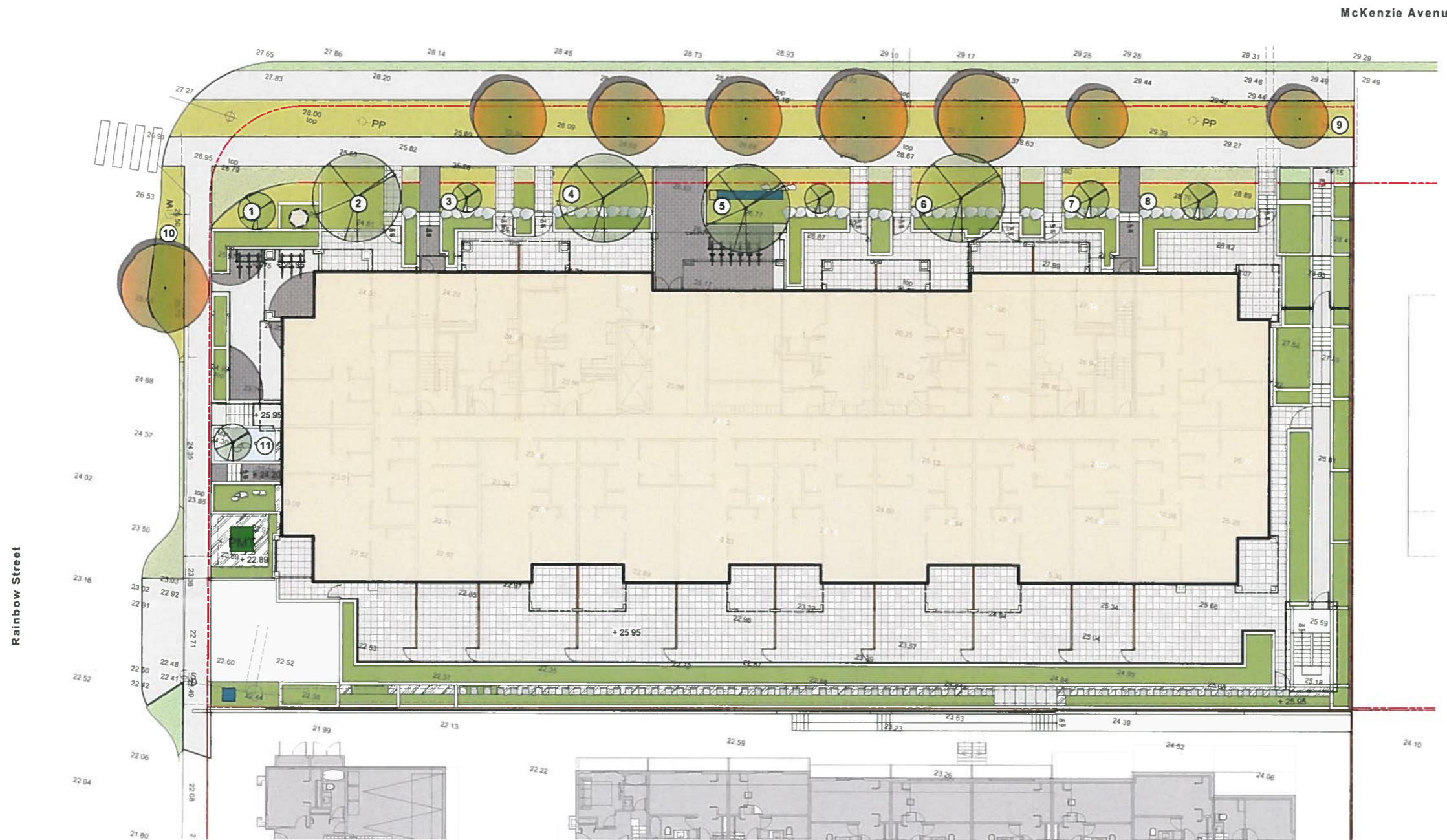
Green wall cable system with climbing vines to provide vertical screening and breakup building facade
 1.8m high perimeter fence
 Green wall cable system with climbing vines to provide vertical screening and breakup building facade
 1.07m high timber railing
 Maintenance access riverstone, stepping stone pathway with concrete stairs and Low Oregon Grape, Western Sword Fern and Salal.
 Raised planters with drought tolerant species Victoria Ceanothus, King Edward VII Flowering Currant, Karl Foerster Feather Reed Grass, Belle Etoile Mock Orange.
 Unit patios feature decorative concrete slabs (Typ.) includes divider fencing and raised metal planters with drought tolerant species
 Maintenance access gate
 Retained Douglas fir tree (#957), DBH: 40cm
 Perimeter landscaping



CHARACTER IMAGES

Landscape Concept Plan - 801 McKenzie Avenue

NOTE: PLAN MUST BE PRINTED IN COLOR



Tree Soil Depth Legend:

- 0.75m Soil Depth
- 1.0m Soil Depth

Tree Type	Minimum Soil Volume
Small Tree	8 Cubic Meters
Medium Tree	12 Cubic Meters
Large Tree	16 Cubic Meters

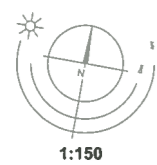
Recommended Nursery Stock

Trees
Total: 18

Botanical Name	Common Name	Size
Acer macrophyllum	Big Leaf Maple	4cm cal
Amelanchier x grandiflora 'autumn Brilliance'	Autumn Brilliance Serviceberry	4cm cal
Cercus canadensis	Eastern Redbud	6cm cal
Cornus 'Eddie's White Wonder'	Eddie's White Wonder Dogwood	4cm cal
Crataegus x lavallei	Lavalle hawthorn	6cm cal
Styrax japonicas	Japanese Snowbell	6cm cal

Soil Volume Compliance Table

Location	Area (m2)	Depth (m)	Number of Trees	Volume Req. (m3)	Total Volume Req. (m3)	Total Volume on Site (m3)	Compliance (Y / N)
1	11.75	0.75	1	8.0	8.0	8.8	Y
2	17.3	0.75	1	12.0	12.0	13.0	Y
3	11.4	0.75	1	8.0	8.0	8.6	Y
4	20.7	0.75	1	12.0	12.0	15.5	Y
5	32	0.75	1	8.0	20.0	24.0	Y
6	18.5	0.75	1	12.0	12.0	13.9	Y
7	11.7	0.75	1	8.0	8.0	8.8	Y
8	15	0.75	1	8.0	8.0	11.3	Y
9	200	0.75	7	8.0	56.0	150.0	Y
10	22.8	0.75	1	8.0	8.0	17.1	Y
11	9	1	1	8.0	8.0	9.0	Y



Soil Volume Plan - 801 McKenzie Avenue

