

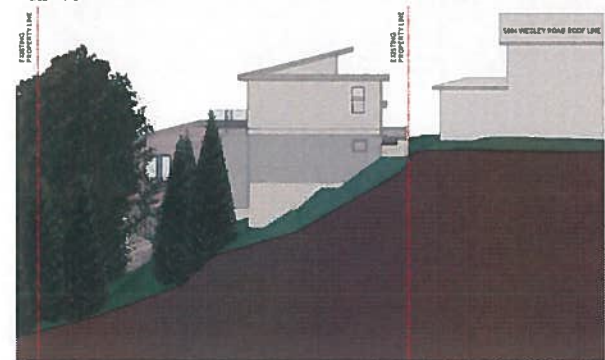


① Development Elevation - North  
3/32" = 1'-0"

LOT C 5070 CATALINA TERRACE

LOT B 5070 CATALINA TERRACE

LOT A 5070 CATALINA TERRACE



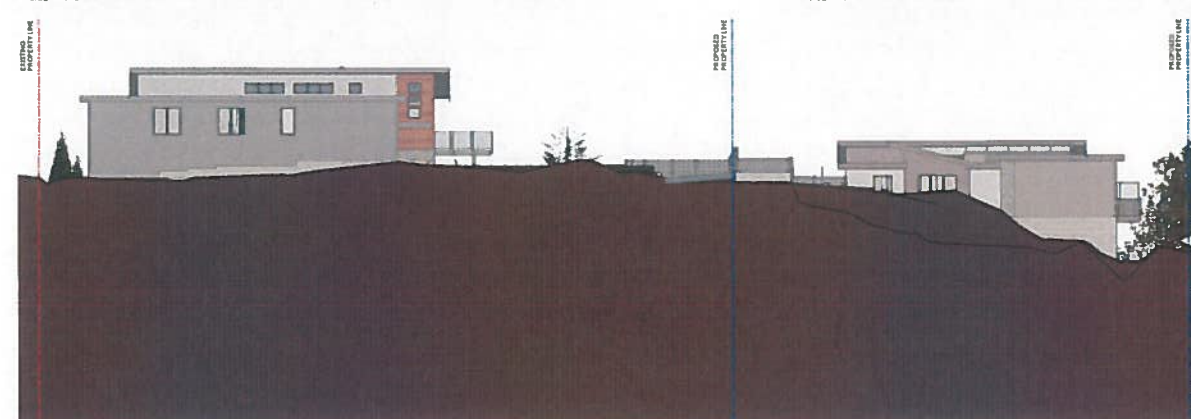
③ Development Elevation - West  
3/32" = 1'-0"

LOT A 5070 CATALINA TERRACE



② Development Elevation - East  
3/32" = 1'-0"

LOT B 5070 CATALINA TERRACE



④ Development Elevation - South  
3/32" = 1'-0"

LOT A 5070 CATALINA TERRACE

LOT B 5070 CATALINA TERRACE

LOT C 5070 CATALINA TERRACE



201-5325 Cordova Bay Road  
Victoria BC V8Y 2L3  
250 999 8693  
hale@hoyst.co | www.hoyst.co

**DESIGN NOTES**

- All drawings shall be made, checked, and approved by the registered professional engineer and architect responsible for the design of the project. The engineer shall be responsible for the structural design and the architect shall be responsible for the architectural design. The engineer shall be responsible for the geotechnical design and the architect shall be responsible for the landscape design. The engineer shall be responsible for the civil design and the architect shall be responsible for the site plan design. The engineer shall be responsible for the mechanical design and the architect shall be responsible for the electrical design. The engineer shall be responsible for the plumbing design and the architect shall be responsible for the fire protection design. The engineer shall be responsible for the energy design and the architect shall be responsible for the accessibility design. The engineer shall be responsible for the sustainability design and the architect shall be responsible for the heritage design. The engineer shall be responsible for the safety design and the architect shall be responsible for the security design. The engineer shall be responsible for the health design and the architect shall be responsible for the social design. The engineer shall be responsible for the environment design and the architect shall be responsible for the culture design. The engineer shall be responsible for the economy design and the architect shall be responsible for the community design. The engineer shall be responsible for the equity design and the architect shall be responsible for the justice design. The engineer shall be responsible for the inclusion design and the architect shall be responsible for the participation design. The engineer shall be responsible for the transparency design and the architect shall be responsible for the accountability design. The engineer shall be responsible for the integrity design and the architect shall be responsible for the honesty design. The engineer shall be responsible for the respect design and the architect shall be responsible for the dignity design. The engineer shall be responsible for the responsibility design and the architect shall be responsible for the stewardship design. The engineer shall be responsible for the leadership design and the architect shall be responsible for the vision design. The engineer shall be responsible for the innovation design and the architect shall be responsible for the change design. The engineer shall be responsible for the collaboration design and the architect shall be responsible for the partnership design. The engineer shall be responsible for the communication design and the architect shall be responsible for the relationship design. The engineer shall be responsible for the conflict resolution design and the architect shall be responsible for the negotiation design. The engineer shall be responsible for the decision making design and the architect shall be responsible for the problem solving design. The engineer shall be responsible for the risk management design and the architect shall be responsible for the crisis management design. The engineer shall be responsible for the quality management design and the architect shall be responsible for the continuous improvement design. The engineer shall be responsible for the performance management design and the architect shall be responsible for the strategic management design. The engineer shall be responsible for the organizational design and the architect shall be responsible for the human resources design. The engineer shall be responsible for the financial design and the architect shall be responsible for the marketing design. The engineer shall be responsible for the legal design and the architect shall be responsible for the public relations design. The engineer shall be responsible for the ethical design and the architect shall be responsible for the corporate social responsibility design. The engineer shall be responsible for the governance design and the architect shall be responsible for the stakeholder management design. The engineer shall be responsible for the compliance design and the architect shall be responsible for the risk assessment design. The engineer shall be responsible for the audit design and the architect shall be responsible for the internal control design. The engineer shall be responsible for the reporting design and the architect shall be responsible for the disclosure design. The engineer shall be responsible for the transparency design and the architect shall be responsible for the accountability design. The engineer shall be responsible for the integrity design and the architect shall be responsible for the honesty design. The engineer shall be responsible for the respect design and the architect shall be responsible for the dignity design. The engineer shall be responsible for the responsibility design and the architect shall be responsible for the stewardship design. The engineer shall be responsible for the leadership design and the architect shall be responsible for the vision design. The engineer shall be responsible for the innovation design and the architect shall be responsible for the change design. The engineer shall be responsible for the collaboration design and the architect shall be responsible for the partnership design. The engineer shall be responsible for the communication design and the architect shall be responsible for the relationship design. The engineer shall be responsible for the conflict resolution design and the architect shall be responsible for the negotiation design. The engineer shall be responsible for the decision making design and the architect shall be responsible for the problem solving design. The engineer shall be responsible for the risk management design and the architect shall be responsible for the crisis management design. The engineer shall be responsible for the quality management design and the architect shall be responsible for the continuous improvement design. The engineer shall be responsible for the performance management design and the architect shall be responsible for the strategic management design. The engineer shall be responsible for the organizational design and the architect shall be responsible for the human resources design. The engineer shall be responsible for the financial design and the architect shall be responsible for the marketing design. The engineer shall be responsible for the legal design and the architect shall be responsible for the public relations design. The engineer shall be responsible for the ethical design and the architect shall be responsible for the corporate social responsibility design. The engineer shall be responsible for the governance design and the architect shall be responsible for the stakeholder management design. The engineer shall be responsible for the compliance design and the architect shall be responsible for the risk assessment design. The engineer shall be responsible for the audit design and the architect shall be responsible for the internal control design. The engineer shall be responsible for the reporting design and the architect shall be responsible for the disclosure design.

**5070 Catalina Terr. - Subdivision**

ISSUE DATE 22Dec07 REV 11

No.	Description	Date
5	Issue for DP	20Jun11
6	Site Plan Rev1	20Nov08
7	Site Plan Rev2	21Jan11
8	DP Revisions 1	22Jun07
9	DP Revisions 2	22Jun07
10	DP Revisions 3	22Jun07
11	DP Revisions 4	22Dec07

Development Elevations

**A1.5**

