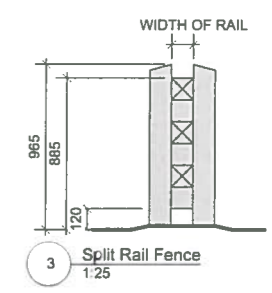
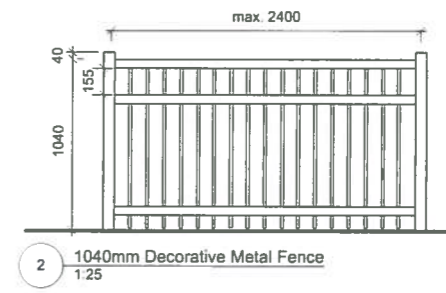
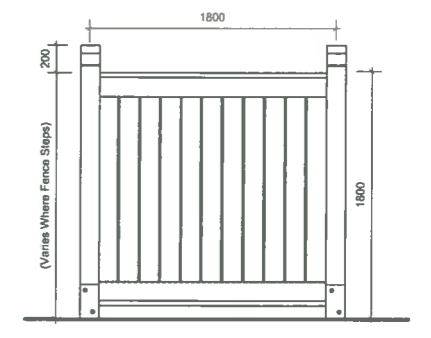
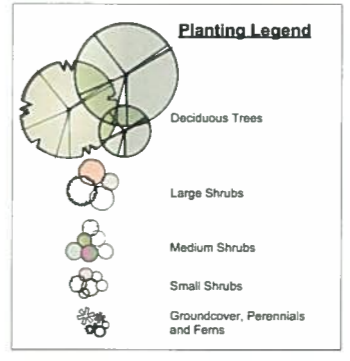


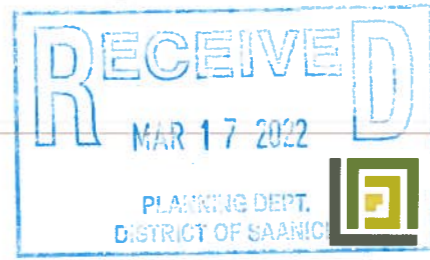
Recommended Nursery Stock

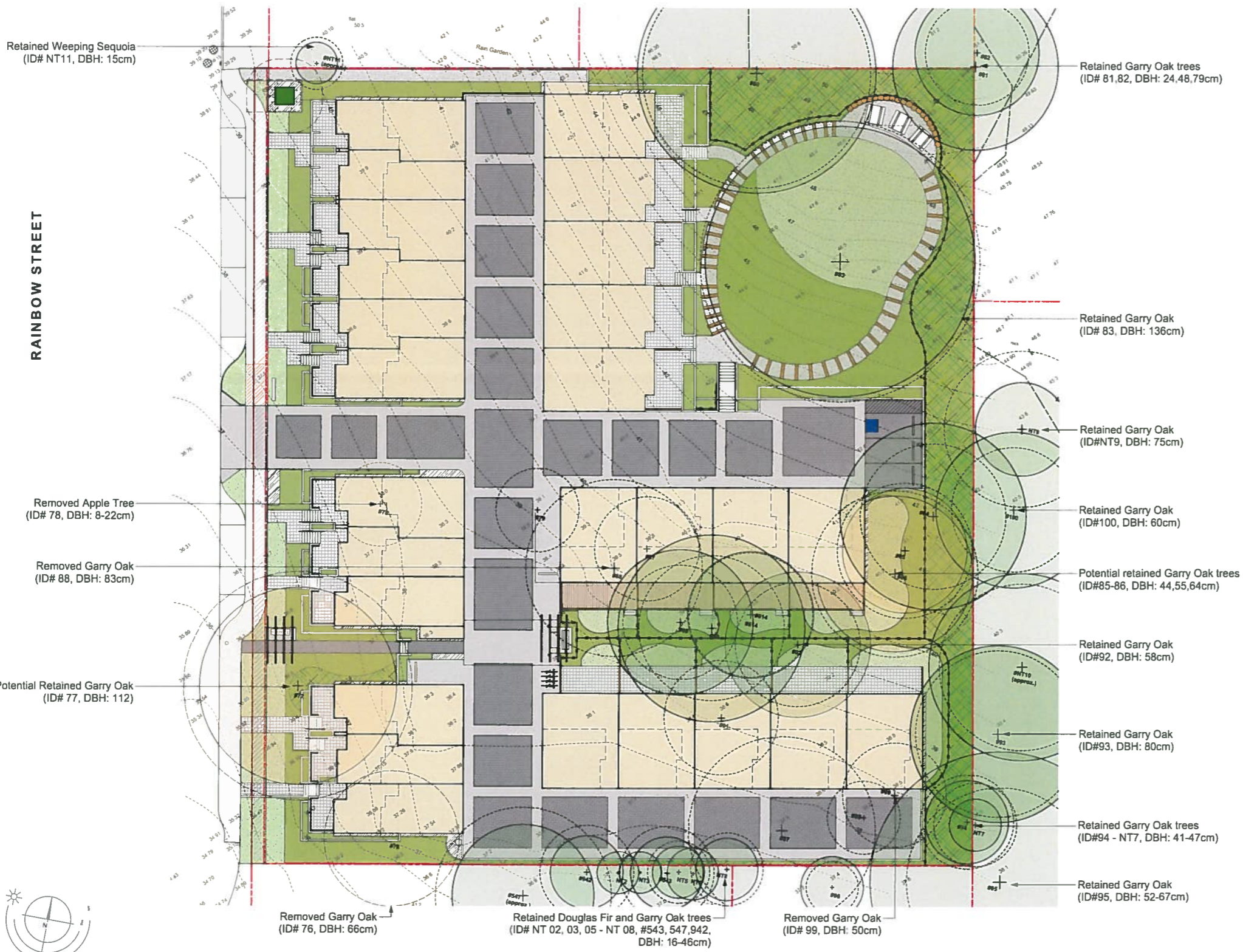
Trees	Botanical Name	Common Name	Size
16	<i>Cercis canadensis</i> 'Forest Pansy'	Forest Pansy Redbud	6cm cal
	<i>Cornus</i> 'Eddie's White Wonder'	Eddie's White Wonder Dogwood	4cm cal
	<i>Magnolia</i> Galaxy	Galaxy Magnolia	6cm cal
	<i>Parrotia persica</i>	Persian Ironwood	6cm cal
	<i>Quercus garryana</i>	Garry Oak	4cm cal
Large Shrubs	Botanical Name	Common Name	Size
64	<i>Holodiscus discolor</i>	Oceanspray	#5 pot
	<i>Philadelphus lewisii</i>	Mock Orange	#5 pot
	Rhododendron 'Janet Blair'	Rhododendron	#5 pot
	<i>Taxus baccata</i> 'Fastigiata'	Insh Yew	#5 pot, 1.5m ht
Medium Shrubs	Botanical Name	Common Name	Size
233	<i>Hydrangea macrophylla</i> 'Lanarth White'	Lanarth White Hydrangea	#5 pot
	<i>Mahonia aquilifolium</i>	Tall Oregon Grape	#5 pot
	<i>Pittosporum tenuifolium</i> 'Silver Magic'	Kohuhu	#5 pot
	<i>Ribes sanguineum</i>	Flowering Currant	#5 pot
	<i>Rosa gymnocarpa</i>	Baldhip Rose	#3 pot
	<i>Symphoricarpos albus</i>	Snowberry	#3 pot
Small Shrubs	Botanical Name	Common Name	Size
561	<i>Arctostaphylos uva ursi</i> 'Vancouver Jade'	Vancouver Jade Kinnickinnick	#1 pot
	<i>Azalea japonica</i> 'Hino White Dwarf'	Hino White Dwarf Azalea	#2 pot
	<i>Gaultheria shallon</i>	Salal	#1 pot
	<i>Mahonia repens</i>	Creeping Mahonia	#1 pot
	<i>Sarcococca hookeriana</i> var. <i>humilis</i>	Dwarf Sweet Box	#2 pot
	<i>Spiraea</i> 'Goldflame'	Goldflame Spirea	#2 pot
Perennials, Annuals and Ferns	Botanical Name	Common Name	Size
470	<i>Blechnum spicant</i>	Deer Fern	#1 pot
	<i>Camassia quamash</i>	Common Camas	#1 pot
	<i>Festuca idahoensis</i>	Idaho Fescue	#1 pot
	<i>Helictotrichon sempervirens</i>	Blue Oat Grass	#1 pot
	<i>Polystichum munium</i>	Sword Fern	#1 pot
	<i>Stipa tenuissima</i>	Mexican Feather Grass	#1 pot
Groundcovers	Botanical Name	Common Name	Size
30	<i>Arctostaphylos uva ursi</i> 'Vancouver Jade'	Vancouver Jade Kinnickinnick	#1 pot

Notes:
 1. All work to be completed to current CSLA Landscape Standards
 2. All soft landscape to be irrigated with an automatic irrigation system
 3. All future tree plantings sites have irrigation systems designed to be suitable for tree watering separate to the surrounding landscape



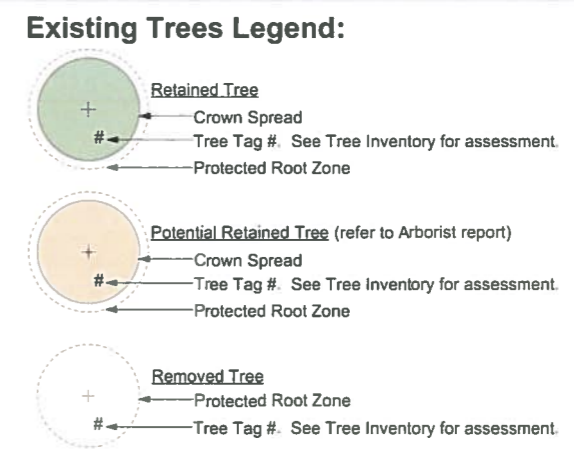
Landscape Concept Plan - 4011 Rainbow Street





RAINBOW STREET

1:200

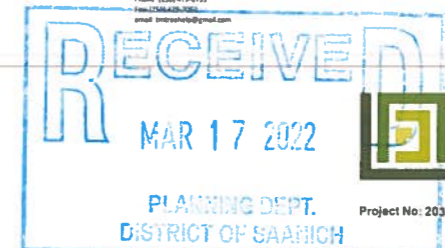


TREE TOTALS
 Total replacement trees required: 13
 Total replacement trees required (incl. TDB): 17
 Total tree proposed: 16
 Difference: +3 / -1

Inventory of Existing Trees

Tree ID	Common Name	Latin Name	DBH (cm)	Height (m)	Canopy Spread (m)	Health	Structure	Remarks and Recommendations	Defect Status	Retention	Retention	Root Impacts	Canopy Pruning	Retention
76	Garry Oak	Quercus garryana	24	10.9	6.1	G	Good	Intermediate canopy tree. Unobstructed trunk base. No root damage observed.	Present	Retained	Retained	None	None	Retained
77	Apple	Malus sp.	8	2.2	2.2	G	Good	Small tree. Pruning recommended to maintain shape.	Present	Removed	Removed	None	None	Removed
78	Apple	Malus sp.	8	2.2	2.2	G	Good	Small tree. Pruning recommended to maintain shape.	Present	Removed	Removed	None	None	Removed
79	Garry Oak	Quercus garryana	136	11.0	11.0	G	Good	Large tree. Pruning recommended to maintain shape.	Present	Retained	Retained	None	None	Retained
80	Garry Oak	Quercus garryana	44	11.0	11.0	G	Good	Intermediate canopy tree. Pruning recommended to maintain shape.	Present	Retained	Retained	None	None	Retained
81	Garry Oak	Quercus garryana	48	11.0	11.0	G	Good	Intermediate canopy tree. Pruning recommended to maintain shape.	Present	Retained	Retained	None	None	Retained
82	Garry Oak	Quercus garryana	55	11.0	11.0	G	Good	Intermediate canopy tree. Pruning recommended to maintain shape.	Present	Retained	Retained	None	None	Retained
83	Garry Oak	Quercus garryana	136	11.0	11.0	G	Good	Large tree. Pruning recommended to maintain shape.	Present	Retained	Retained	None	None	Retained
84	Garry Oak	Quercus garryana	71	10.9	7.1	G	Good	Intermediate canopy tree. Pruning recommended to maintain shape.	Present	Retained	Retained	None	None	Retained
85	Garry Oak	Quercus garryana	44	11.0	4.1	G	Good	Intermediate canopy tree. Pruning recommended to maintain shape.	Present	Retained	Retained	None	None	Retained
86	Garry Oak	Quercus garryana	55	11.0	8.1	G	Good	Intermediate canopy tree. Pruning recommended to maintain shape.	Present	Retained	Retained	None	None	Retained
87	Garry Oak	Quercus garryana	44	11.0	7.1	G	Good	Intermediate canopy tree. Pruning recommended to maintain shape.	Present	Retained	Retained	None	None	Retained
88	Garry Oak	Quercus garryana	83	11.0	8.1	G	Good	Intermediate canopy tree. Pruning recommended to maintain shape.	Present	Retained	Retained	None	None	Retained
89	Garry Oak	Quercus garryana	58	11.0	7.1	G	Good	Intermediate canopy tree. Pruning recommended to maintain shape.	Present	Retained	Retained	None	None	Retained
90	Garry Oak	Quercus garryana	76	11.0	7.1	G	Good	Intermediate canopy tree. Pruning recommended to maintain shape.	Present	Retained	Retained	None	None	Retained
91	Garry Oak	Quercus garryana	51	11.0	1.1	G	Good	Intermediate canopy tree. Pruning recommended to maintain shape.	Present	Retained	Retained	None	None	Retained
92	Garry Oak	Quercus garryana	58	11.0	4.1	G	Good	Intermediate canopy tree. Pruning recommended to maintain shape.	Present	Retained	Retained	None	None	Retained
93	Garry Oak	Quercus garryana	80	11.0	8.1	G	Good	Intermediate canopy tree. Pruning recommended to maintain shape.	Present	Retained	Retained	None	None	Retained
94	Garry Oak	Quercus garryana	41	11.0	4.1	G	Good	Intermediate canopy tree. Pruning recommended to maintain shape.	Present	Retained	Retained	None	None	Retained
95	Garry Oak	Quercus garryana	52	11.0	7.1	G	Good	Intermediate canopy tree. Pruning recommended to maintain shape.	Present	Retained	Retained	None	None	Retained
96	Garry Oak	Quercus garryana	66	11.0	6.1	G	Good	Intermediate canopy tree. Pruning recommended to maintain shape.	Present	Retained	Retained	None	None	Retained
97	Garry Oak	Quercus garryana	47	11.0	4.1	G	Good	Intermediate canopy tree. Pruning recommended to maintain shape.	Present	Retained	Retained	None	None	Retained
98	Garry Oak	Quercus garryana	41	11.0	4.1	G	Good	Intermediate canopy tree. Pruning recommended to maintain shape.	Present	Retained	Retained	None	None	Retained
99	Garry Oak	Quercus garryana	50	11.0	5.1	G	Good	Intermediate canopy tree. Pruning recommended to maintain shape.	Present	Retained	Retained	None	None	Retained
100	Garry Oak	Quercus garryana	60	11.0	6.1	G	Good	Intermediate canopy tree. Pruning recommended to maintain shape.	Present	Retained	Retained	None	None	Retained
101	Garry Oak	Quercus garryana	41	11.0	4.1	G	Good	Intermediate canopy tree. Pruning recommended to maintain shape.	Present	Retained	Retained	None	None	Retained
102	Garry Oak	Quercus garryana	47	11.0	4.1	G	Good	Intermediate canopy tree. Pruning recommended to maintain shape.	Present	Retained	Retained	None	None	Retained
103	Garry Oak	Quercus garryana	41	11.0	4.1	G	Good	Intermediate canopy tree. Pruning recommended to maintain shape.	Present	Retained	Retained	None	None	Retained
104	Garry Oak	Quercus garryana	47	11.0	4.1	G	Good	Intermediate canopy tree. Pruning recommended to maintain shape.	Present	Retained	Retained	None	None	Retained
105	Garry Oak	Quercus garryana	41	11.0	4.1	G	Good	Intermediate canopy tree. Pruning recommended to maintain shape.	Present	Retained	Retained	None	None	Retained
106	Garry Oak	Quercus garryana	47	11.0	4.1	G	Good	Intermediate canopy tree. Pruning recommended to maintain shape.	Present	Retained	Retained	None	None	Retained
107	Garry Oak	Quercus garryana	41	11.0	4.1	G	Good	Intermediate canopy tree. Pruning recommended to maintain shape.	Present	Retained	Retained	None	None	Retained
108	Garry Oak	Quercus garryana	47	11.0	4.1	G	Good	Intermediate canopy tree. Pruning recommended to maintain shape.	Present	Retained	Retained	None	None	Retained
109	Garry Oak	Quercus garryana	41	11.0	4.1	G	Good	Intermediate canopy tree. Pruning recommended to maintain shape.	Present	Retained	Retained	None	None	Retained
110	Garry Oak	Quercus garryana	47	11.0	4.1	G	Good	Intermediate canopy tree. Pruning recommended to maintain shape.	Present	Retained	Retained	None	None	Retained
111	Garry Oak	Quercus garryana	41	11.0	4.1	G	Good	Intermediate canopy tree. Pruning recommended to maintain shape.	Present	Retained	Retained	None	None	Retained

Tree Preservation Plan - 4011 Rainbow Street



Revision A. Feb. 28th 2022
LADR LANDSCAPE ARCHITECTS
 #3-864 Queens Ave. Victoria B.C. V8T 1M5
 Phone (250) 598-0105
 Project No: 2021 17 June 2021

Recommended Nursery Stock

Trees
16

Botanical Name	Common Name	Size
Cercis canadensis 'Forest Pansy'	Forest Pansy Redbud	6cm cal
Cornus 'Eddie's White Wonder'	Eddie's White Wonder Dogwood	4cm cal
Magnolia Galaxy	Galaxy Magnolia	6cm cal
Parrotia persica	Persian Ironwood	6cm cal
Quercus garryana	Garry Oak	4cm cal



Tree Soil Depth Legend:

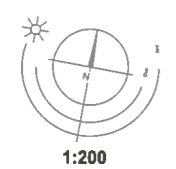
	0.225m Soil Depth
	0.6m Soil Depth
	0.75m Soil Depth
	1.0m Soil Depth
	1.2m Soil Depth

Tree Type	Minimum Soil Volume
Small Tree	8 Cubic Meters
Medium Tree	12 Cubic Meters
Large Tree	16 Cubic Meters

Soil Volume Compliance Table

Location	Area (m ²)	Depth (m)	Number of Trees	Volume Req. (m ³)	Total Volume Req. (m ³)	Total Volume on Site (m ³)	Compliance (Y / N)
1	31.8	0.75	1	8.0	8.0	23.9	Y
2	26.5	0.75	1	8.0	8.0	19.9	Y
3	16.6	0.75	1	8.0	8.0	12.5	Y
4	13.6	0.75	1	8.0	8.0	10.2	Y
5	14.7	0.75	1	8.0	8.0	11.0	Y
6	26.1	0.75	1	16.0	16.0	19.6	Y
7	20.6	0.75	1	16.0	16.0	15.5	Y
8	79.3	0.75	1	8.0	8.0	59.5	Y
9	331	0.75	8	16.0	128.0	248.3	Y
10	7.8	1	1	16.0	16.0	7.8	N*
11	6.8	1.2	1	8.0	8.0	8.2	Y

Note: Existing soil with protected root zones to be retained as directed by project arborist
* 8.2cu m of structural soil to be installed under the sidewalk make up soil volume deficit.



Soil Volume Plan - 4011 Rainbow Street



Project No: 2031 17 June 2021
Revision A, Feb. 28th 2022
#3-864 Queens Ave. Victoria B.C. V8T 1M5
Phone: (250) 598-0105