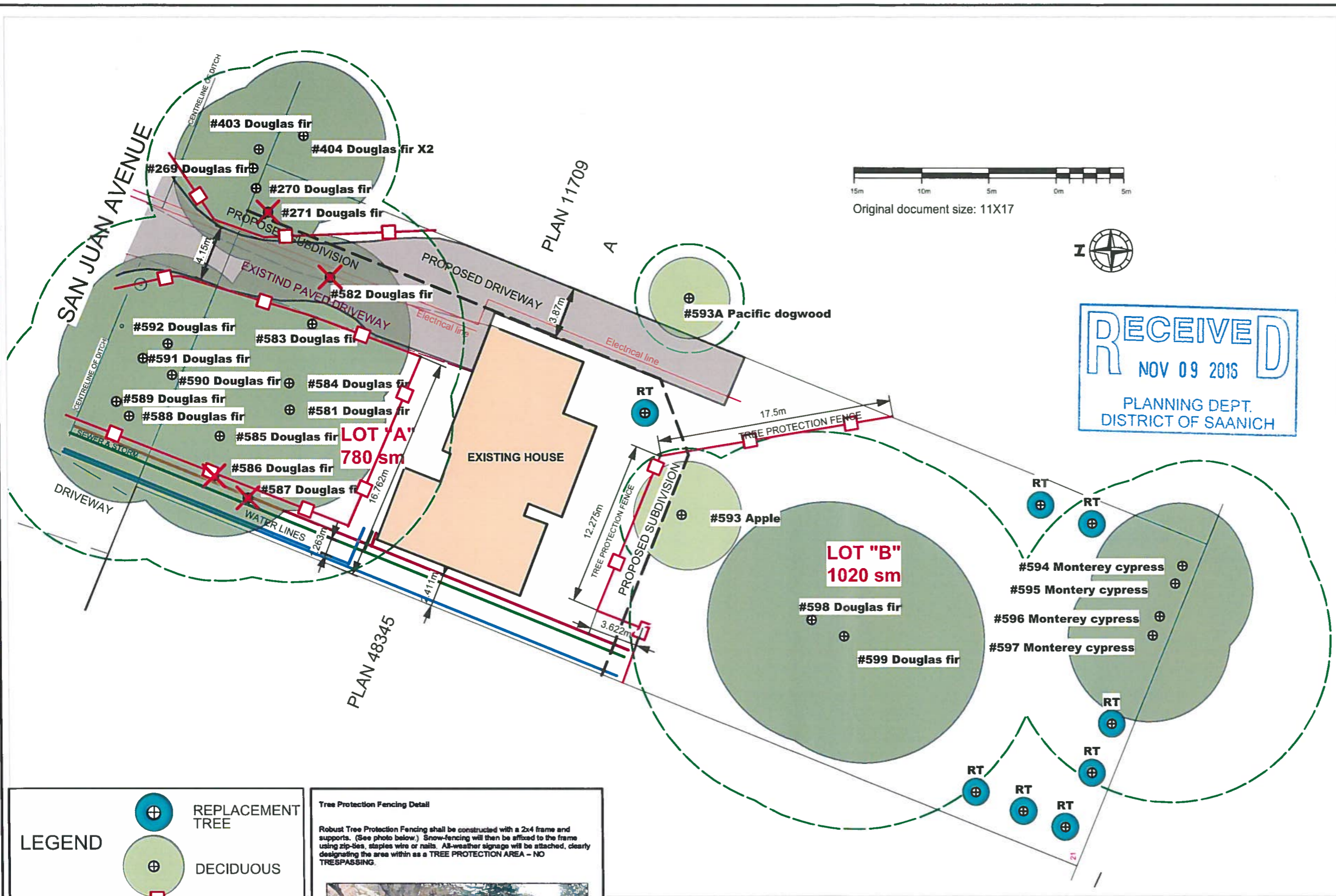


TREE PRESERVATION MEASURES

1. Grubbing, Tree Removal and blasting to be carried out under supervision of the Arborist.
2. Stumps within Tree Protection Areas (TPAs) should be chipped out or left in place, not excavated.
3. Tree fencing to be erected immediately following grubbing/tree removal and before further site preparation or construction and remain in good condition throughout the duration of the project.
4. Any excavation adjacent to TPAs (including underground services) must be supervised by the Arborist.
5. No dumping of fill, concrete or paint tailings within TPAs.
6. Limited storage of materials within TPA must be authorized by Arborist.
7. Vegetative debris from tree removals should be chipped up and dispersed on site within the TPAs to a maximum depth of 100mm.
8. 8 replacement Garry Oak trees (2.5cm cal.) will be planted in compensation for the removal of 4 bylaw-protected trees (2 for 1). The precise location for the replacement trees will be determined at the landscaping phase.
9. Trees #598 and 599 will likely be removed at the building permit phase and replacement plant as per Tree Protection Bylaw. Retain and protect these two trees until the building permit is approved and removal permit is granted.



LEGEND

- REPLACEMENT TREE
- DECIDUOUS
- CONIFER
- REMOVE TREE
- TREE FENCING
- TREE TAG #
- TREE CENTRE
- TREE CANOPY
- ROOT ZONE

Tree Protection Fencing Detail

Robust Tree Protection Fencing shall be constructed with a 2x4 frame and supports. (See photo below.) Snow-fencing will then be affixed to the frame using zip-ties, staples wire or nails. All-weather signage will be attached, clearly designating the area within as a TREE PROTECTION AREA - NO TRESPASSING.

	PROJECT		PROJECT NO.	16-08
	1917 San Juan Avenue, Saanich, BC		DATE	August 26, 2016
SHEET TITLE	Tree Management Plan		SCALE	1:300
	REV NO	DESCRIPTION	DRAWN BY	LS
	0	FOR REVIEW	SHEET NO.	1 of 2
	0	FOR REVIEW		