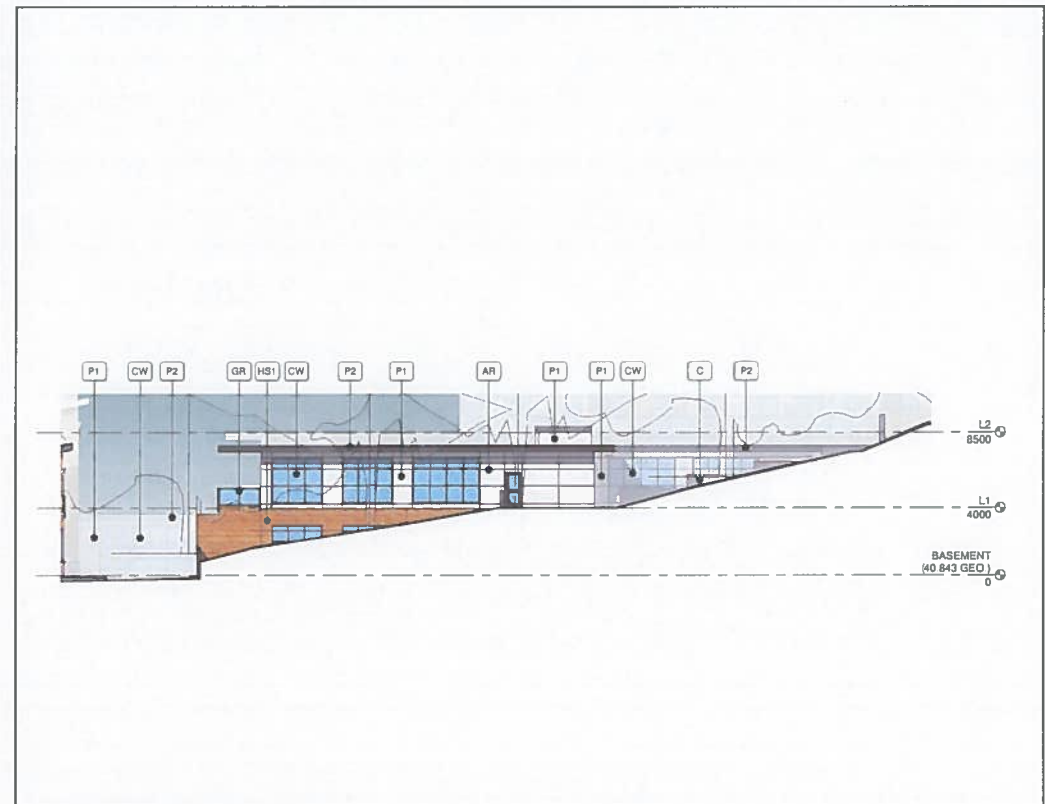
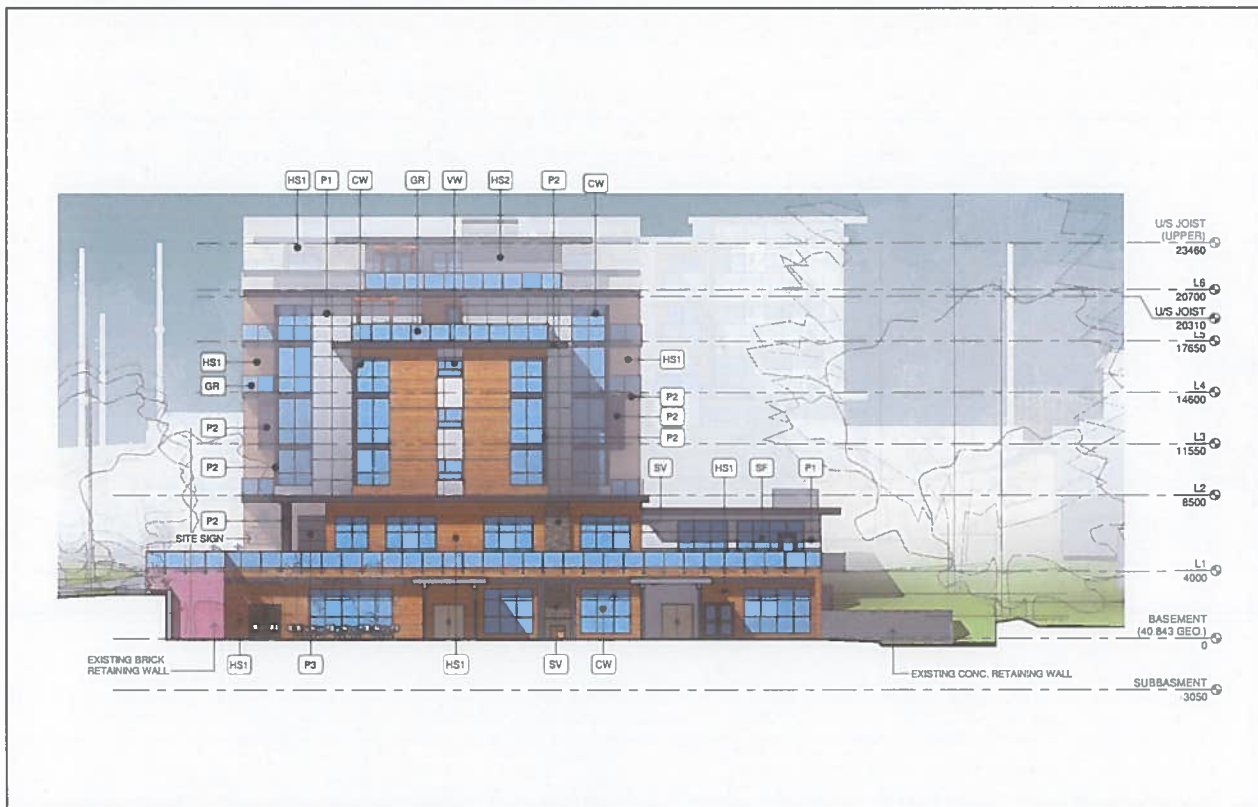




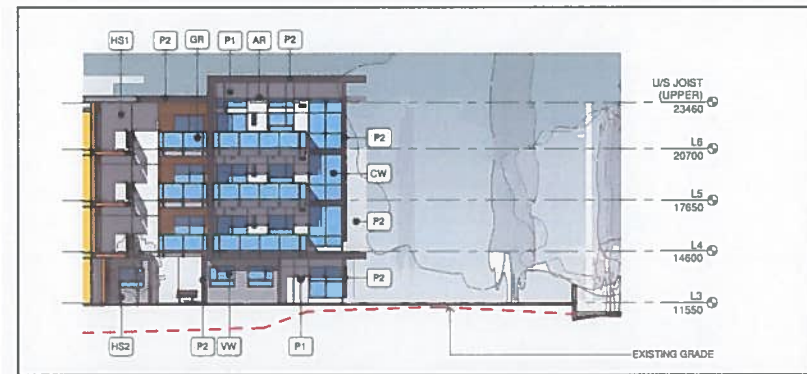
1 EXTERIOR ELEVATION - NORTH (BLDG A)
1 : 200



2 EXTERIOR ELEVATION - NORTH (DAYCARE)
1 : 200



3 EXTERIOR ELEVATION - EAST (BLDG A)
1 : 200



4 EXTERIOR ELEVATION - EAST (BLDG B)
1 : 200

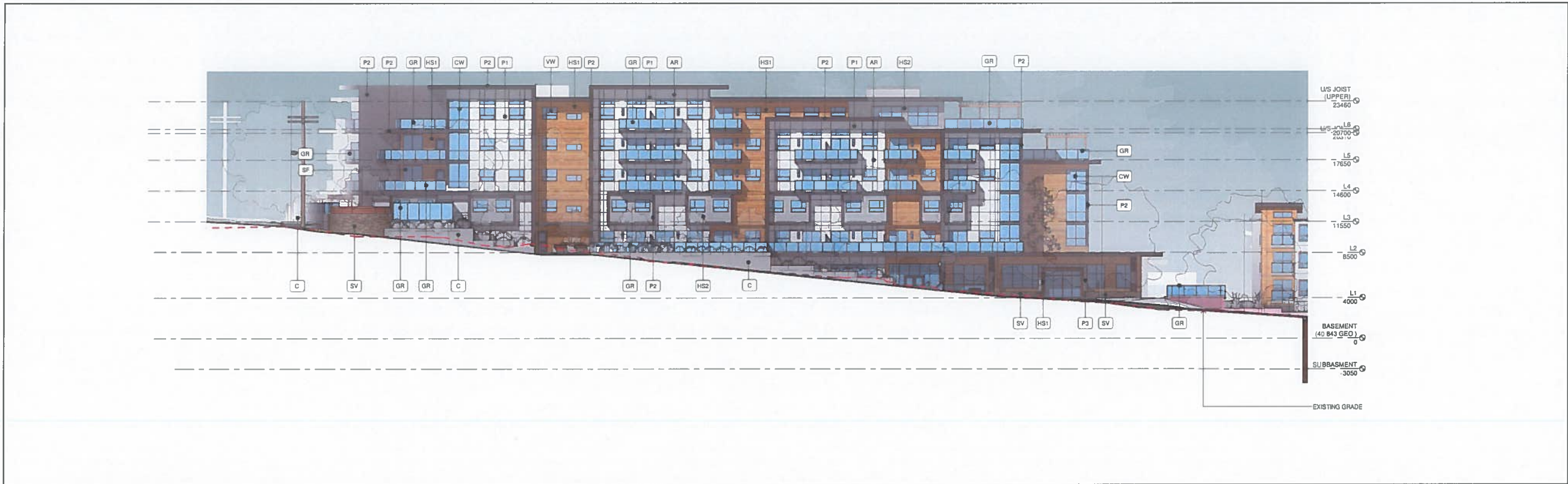


5 EXTERIOR ELEVATION - NORTH (BLDG B)
1 : 200

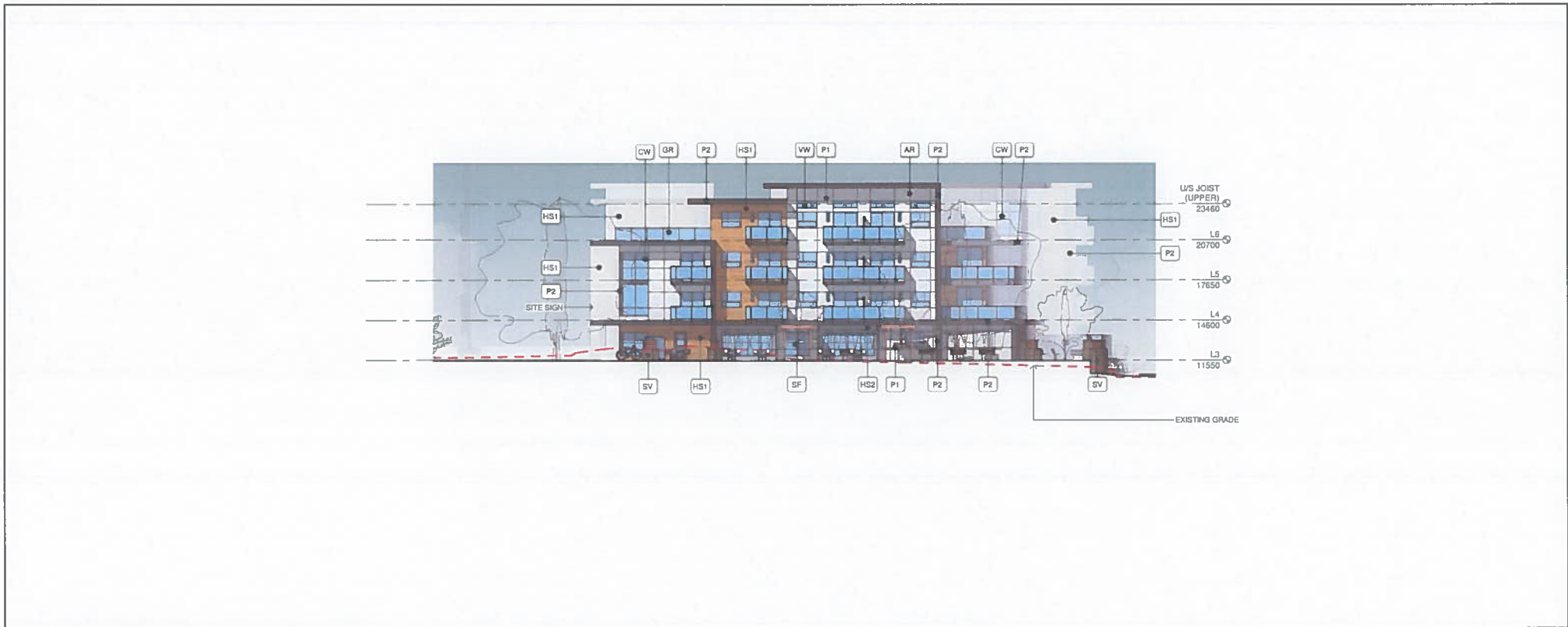
ELEVATION KEY NOTES

KEYNOTE LEGEND

AR	ALUMINUM REVEAL - BLACK ANNOXIDIZED
C	CONCRETE - SANDBLASTED FINISH
CW	CURTAINWALL - BLACK ANNOXIDIZED
GR	ALUMINUM GUARDRAIL - GLAZED - BLACK ANNOXIDIZED
HS1	HORIZONTAL SIDING - WOODGRAIN
HS2	HORIZONTAL SIDING - LIGHT GREY
P1	PANEL COLOUR 1 - WHITE
P2	PANEL COLOUR 2 - CHARCOAL
P3	PANEL COLOUR 3 - LIGHT GREY
SF	STOREFRONT GLAZING - BLACK ANNOXIDIZED
SV	STONE VENEER - PACIFIC ASHLAR
VW	ALUMINUM CLAD VINYL WINDOW - BLACK ANNOXIDIZED



1 EXTERIOR ELEVATION - SOUTH
1 : 200



2 EXTERIOR ELEVATION - WEST
1 : 200

ELEVATION KEY NOTES

KEYNOTE LEGEND

AR	ALUMINUM REVEAL - BLACK ANNOOZED
C	CONCRETE - SANDBLASTED FINISH
CW	CURTAINWALL - BLACK ANNOOZED
GR	ALUMINUM GLAZEDRAL - GLAZED - BLACK ANNOOZED
HS1	HORIZONTAL SIDING - WOODGRAIN
HS2	HORIZONTAL SIDING - LIGHT GREY
P1	PANEL COLOUR 1 - WHITE
P2	PANEL COLOUR 2 - CHARCOAL
P3	PANEL COLOUR 2 - LIGHT GREY
SF	STOREFRONT GLAZING - BLACK ANNOOZED
SV	STONE VENEER - PACIFIC ASHLAR
VW	ALUMINUM CLAD VINYL WINDOW - BLACK ANNOOZED

KPL James architecture
519 PANDORA AVENUE, VICTORIA, B.C. V8W 1N5
250-388-4261

Trillium
BOUTIQUE SENIOR LIVING

TRILLIUM DEVELOPMENT
THE TERRACES AT HIGHGATE
1514 & 1520 Cedar Hill Cross Rd. & 3801 & 3811 Cedar Hill Rd.

ELEVATIONS

KPLJ JOB #:
SCALE:
DRAWN BY:
CHECKED BY:
DATE:

RECEIVED
SEP 27 2018
A-3.2
PLANNING DEPT.
DISTRICT OF SAANICH